

CROOKWELL GUNNING - TARALGA

Binda - Bigga - Collector - Dalton - Grabben Gullen - Laggan - Tuena

So close...but a world away



WELCOME

Share your experience #visitupperlachlan  

UPPER LACHLAN SHIRE Southern Tablelands NSW



So close...but a world away

Autumn in Crookwell



UPPER LACHLAN SHIRE TOURIST ASSOCIATION

36 Goulburn Street (PO Box 303)
Crookwell NSW 2583

Phone: 02 4832 1988

Fax: 02 4832 0119

Email: info@visitupperlachlan.com.au

www.visitupperlachlan.com.au

VISITOR INFORMATION CENTRES

Crookwell Visitor Information Centre

36 Goulburn St, Crookwell NSW 2583
Phone: 02 4832 1988

Gunning Paper Shop

84 Yass St Gunning NSW 2581
Phone 4845 1988

Taralga Gifts & Goodies

23 Orchard St, Taralga NSW 2580
Phone: 02 4840 2558

Crookwell Open Mon-Fri 9 - 5 | Sat & Sun 10 - 4

Gunning Open Mon - Fri 7 - 1 Sat & Sun 7 - 2

Taralga Open Thurs - Mon 10 - 4

TUNE IN

- 106.1 FM 2GN
- 1368 AM 2GN
- 93.5 Eagle FM



HOW TO GET HERE

BY CAR: The Upper Lachlan Shire is perfectly positioned just 2.5hrs from Sydney and less than an hour from Canberra.

BY PUBLIC TRANSPORT: For details on reaching the villages of the Upper Lachlan by train and bus please contact the Visitor Information Centre on 02 4832 1988.



EMERGENCY NUMBERS

Upper Lachlan Shire Council

02 4830 1000 (BH)

Crookwell (AH) 0429 786 659

Gunning (AH) 0427 454 206

Crookwell Hospital - 02 4837 5000

SES - 132 500

NRMA Roadside Assistance - 13 11 22

Police / Fire / Ambulance - 000

Poison Information Centre - 13 11 26

Welcome to the Southern Tablelands located on the Great Dividing Range between Sydney and Melbourne and just north of Canberra, the nation's capital.

Take the time to explore the great diversity of the region from the underground wonders of Wombeyan Caves to the outdoor adventures of Lake Wyangala, from stories of pioneering and bushranging to the creation of world class produce.

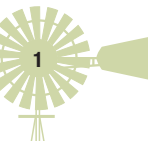
This is a region with stories to tell, beautiful vistas to behold and a warm country reception to be enjoyed - welcome to the Upper Lachlan Shire - *so close but a world away.*



Dalton

CONTENTS

Major annual events	2
Towns and Villages	4
The Open Road	6
Pedal Power.....	8
Stretch Your Legs.....	9
Suggested Itineraries.....	10
Groups and Functions.....	12
Live, Work, Invest	13
Regional map	14
Town Maps	16
Explore Nature	18
Savour	20
Shopping	22
Arts and Culture	24
Animal Encounters	25
Parks, Gardens and more	26
Discover History	28
Accommodation	30
Caravan and Camping	34
Canberra Regional Tablelands	36
Directory	38



MAJOR ANNUAL EVENTS



JANUARY

- Lavender, Herb & Chilli Festival
- Australia Day Celebrations
- Taralga Rodeo

FEBRUARY

- Gunning PA&I Show
- Crookwell AP&H Show

MARCH

- Taralga AP&H Show
- Binda Picnic Races
- Laggan Pub Car Show

APRIL

- Jerrawa Show
- Bigga's Biggest Market

MAY

- Collector Village Pumpkin Festival
- Crookwell Potato Festival
- Crookwell Bake & Brew

JUNE

- Taralga Art Show
- Crookwell Amateur Dramatic Society Production
- Gunning Patchwork Weekend

AUGUST

- Grabine Freshwater Fishing Competition

SEPTEMBER

- Gunning Fireworks Festival

OCTOBER

- Crookwell Rotary Swap Meet
- Mary Gilmore Weekend

NOVEMBER

- Taralga Vintage Farm Field Days
- Kids Acting On Stage (KAOS)
- Crookwell Garden Festival
- Clawfield Cup

DECEMBER

- Art on the Range
- Crookwell Christmas in the Park
- Christmas Carols in the villages



MONTHLY MARKETS

TARALGA LIONS MARKETS

– 1st Sunday excl Jan.

LAGGAN MARKETS

– 3rd Saturday excl Dec and Jan

GUNNING LIONS MARKETS

– Last Sunday excl Dec

Laggan and Gunning will hold special pre-Xmas markets.

For all up to date details on events go to

www.visitupperlachlan.com.au



CROOKWELL POTATO FESTIVAL

SECOND SATURDAY IN MAY

CELEBRATING REGIONAL PRODUCE & HERITAGE



CROOKWELL SHOWGROUND, TOWNSHIP & SURROUNDS
JUST AN HOUR & A HALF NORTH OF CANBERRA

www.crookwellpotatofestival.com.au



CROOKWELL GARDEN FESTIVAL

2ND WEEKEND OF NOVEMBER



Every year, some of Crookwell district's best town and country gardens open their gates to the public on the second weekend of November. The Saturday Garden Lovers Market sells an exciting array of plants, tools, garden art, and much more.

It's a weekend to indulge in all things gardening.

www.crookwellgardenfestival.com



TARALGA RODEO

Grab the family and meet your mates at the legendary Taralga Rodeo and Campdraft every Australia Day Long Weekend. Competitors and spectators come from far and wide to enjoy the heart pumping rodeo action, campdraft, gymkhana, dog trials and more. Hot food, cold drinks, stalls, children's rides and amusements. Take the chance to enjoy country music with a top band on Saturday night.

When: Australia Day Long Weekend

Where: Taralga Showground
Phone: 0413 994 239

www.taralgarodeo.com.au



CROOKWELL AMATEUR DRAMATIC SOCIETY

The Crookwell Amateur Dramatic Society (CADS) has been staging performances every year since reforming in 1987, specializing in musicals and comedies that have entertained theatre goers from far and wide. Each year CADS stages a youth production with their Kids Acting on Stage (KAOS) and a production with the senior performers.

All the details of upcoming productions can be found on the website or through the Crookwell Visitor Information Centre.

New members welcome

When: Various Dates
Where: Crookwell Memorial Hall
Phone: 02 48321988
Email: crookwellcads@gmail.com

www.cads.org.au

TOWNS & VILLAGES

Share your experience #visitupperlachlan  



Binda Mill



Crookwell

Boasting snow dusted winters with cosy warm fires, autumns ablaze with colour, spring blooms galore and mild and sunny summers, the Upper Lachlan region is nestled high on the Great Dividing range less than an hour from Canberra and 2 & ½ hours from Sydney, the perfect distance for a day, a weekend or a week.

CROOKWELL & SURROUNDS

CROOKWELL - Renowned for its seed potato production, Crookwell is the largest town in the region and offers the visitor a wealth of things to see and do. Centrally located, Crookwell is an ideal base for exploring the wider region.

LAGGAN - Nowadays a peaceful hamlet, Laggan was once host to bushrangers and troopers as it was located on the main road between Goulburn and the Tuena goldfields. Now home to amazing markets, a great pub, intimate restaurant, brewery, vineyard, gardens and more, Laggan remains a vibrant community.

BINDA - Once the administrative centre of the district in the 1800s, Binda is now best known for horse racing and gardens. The "Funny Hill" race course has been holding race meetings since 1848 and is home to the annual Binda Picnic Races. Nearby Markdale Station features a five acre, award winning Edna Walling garden which is not to be missed.

TUENA - Bushranger stories or gold mining history - take your pick as Tuena is rich in both being the site of a major gold find in 1851. Located in a picturesque valley on the road between Goulburn and Bathurst, Tuena offers great camping, fishing, fossicking and more.

BIGGA - Famous for fine wool, trout fishing, stunning scenery and being the gateway to Lake Wyangala, Bigga sits proudly on the top of the range about 40 minutes north of Crookwell. The town is CMCA RV Friendly and welcomes its frequent visitors with open arms.

GRABBen GULLEN - Only fifteen minutes from Crookwell is its friendly neighbour; Grabben Gullen. This village gets its name from the Aboriginal word for "small waters" which describes this town perfectly. Sapphires, garnets, zircons and gold have been found in abundance over the years in the many feeder streams.

GUNNING & SURROUNDS

GUNNING - Two minutes off the Hume Highway between Sydney and Melbourne, Gunning has a reputation for excellent food and facilities as well as a friendly chat. Barbour Park beside beautiful Meadow Creek is perfect for a picnic and then explore this historic town using the self-guided Gunning Historical Walk.

DALTON - Home to a 40 million year old fossil leaf deposit, Dalton is also famous for sitting on a fault line and experiencing minor but persistent tremors. Once described in early records as "...the haunt of cattle duffers, bushrangers and robbery under arms..." today, this peaceful small town protects its heritage with pride and dedication.

COLLECTOR - Located just off the Federal Highway between Goulburn and Canberra, Collector is most famous for the annual Collector Village Pumpkin Festival that draws visitors from across the state to this quirky food festival. The aptly named Bushranger Hotel stands beside a memorial to Constable Nelson who was shot dead by John Dunn, a member of Ben Hall's gang in 1865.

TARALGA & SURROUNDS

TARALGA - The first thing that strikes you when entering Taralga is the stone architecture much of which dates from the 1860s to 1890s, not quite Georgian, not quite Victorian but very Taralgan. There is much doubt as to the origin of the name however one theory is that the village was originally called "Trial Gang" as it was one of the chief centres in Argyle where convicts and bushrangers were tried.

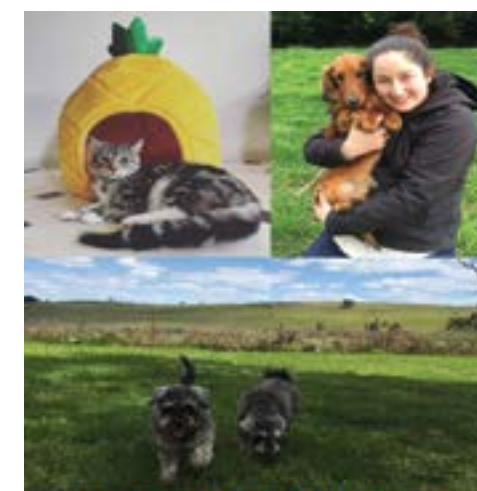
WOMBEGAN - In 1865, Wombeyan became the first area in Australia to be reserved for the protection of caves and there are still structures dating from the early 1900's in some caves. Today, Wombeyan Karst Conservation Reserve boasts some of NSW's most impressive show caves, including Figtree Cave, widely regarded as one of the state's best self-guided cave experiences, and others that you can experience on a guided tour. Aside from the show caves, the reserve also has bushwalks, including the Waterfall track that features scenic waterfall views and Mares Forest Creek track.

Meet the Locals

One of the joys of travelling through regional New South Wales is the ability to meet the locals like Evan, Sally and Obi from Laggan Pantry.

Meet some of the locals and read their stories on our website, get an understanding of their passion for what they do, why they love the region they call home and then come and meet them in person!

www.visitupperlachlan.com.au



GIVE YOUR BEST MATE A BREAK

Here at Pawtails Rural Retreat we offer genuine accommodation set on 60 acres of picturesque rural tranquility for your fur babies. Dogs and Cats big and small catering for their unique personalities and dispositions. Assurance is given that your furry family members will have the highest level of care, special attention, cleanliness and comfort.

- Dog boarding service
- Cat boarding service
- Doggie day care
- Daily Dog/Cat Exercise
- Grooming
- Door to door pick up and delivery service



CALL TODAY 02 4837 3027

PAWTAILSBOARDING.COM.AU | 2549 LAGGAN, TARALGA ROAD LAGGAN | INFO@PAWTAILSBOARDING.COM.AU

THE OPEN ROAD

Share your experience #visitupperlachlan



The road to Bathurst

The Southern Tablelands offers some incredible countryside ranging from rolling hills with views forever to stunning vistas over the western Blue Mountains. High on the range the region is the source of water that flows in all directions and includes the Lachlan, Wollondilly and Abercrombie Rivers.

The Upper Lachlan is ideally located with main roads leading north to the Central West, South to the Canberra region and west to the Riverina.

See page 14 for a detailed Regional Map.

THE OLD HUME HIGHWAY ROUTE 31

Since Hume and Hovell's 1824 expedition, the ground was laid for a permanent road from Sydney to Port Phillip in Victoria. Much of the modern Hume Highway follows the path that Hume took nearly 200 years ago. Over the years the many small townships that were stopping points along the highway have been bypassed. One of the results of this policy has been to create a network of quiet country towns that offer the traveller fantastic places to take a break, enjoy great food and facilities.

One such town is Gunning, situated on the "Old Hume Highway" between Goulburn and Yass. In this part of the region, a large section of the old highway can still be enjoyed with the added advantage that as you cross the Cullerin Range there are fantastic views of the Main Southern Railway. Join the "Old Hume Highway" either at Gunning or at Breadalbane and make sure you stop at the Hume Monument at Fish River.

New South Wales Roads and Maritime Services has produced an excellent publication "The Old Hume Highway - History begins with a road" which can be downloaded from www.visitupperlachlan.com.au



CENTRAL WEST CONNECTION

The upper Southern Tablelands was first explored in the attempt to connect the Goulburn Plains to the Bathurst Plains. Expeditions passed through modern day Taralga and the Crookwell district.

Today's traveller can explore the same paths in comfort with two fantastic main roads now connecting the region to the Central West areas of Orange, Bathurst and Oberon. Both the Tablelands Way and the Bathurst Rd afford visitors breathtaking views as they pass through prime farming and native bushland including crossing the majestic Abercrombie River.



THE TABLELANDS WAY

The Tablelands Way experience is a wonderful opportunity to discover rural NSW. It is one of the most scenic routes of the state and connects Canberra to the Hunter through Goulburn, Taralga, Oberon, Lithgow and Mudgee. The diversity of adventures and attractions is truly remarkable with everything from markets and festivals, camping spots to 5 star hotels, gentle bush walks to wild canyoning, tall tales to historic truths, food, wine and geological wonders.

For more information pick up a Tablelands Way brochure from a Visitor Information Centre or visit www.tablelandsway.com.au

SCENIC AND HISTORIC DRIVES

ROUTE 1 - WINE TO CAVES - Kick off your trip with a visit to Kingsdale Winery and then head north through the town of Crookwell and the villages of Binda and Tuena which is an old gold mining site. Finish up by visiting the underground world of Abercrombie Caves.

ROUTE 2 - THE TABLELANDS WAY - Welcome to McArthur country with stunning views of the Blue Mountains this scenic drive takes you from Goulburn, Australia's first inland city, all the way to Bummaroo Ford on the Abercrombie River, an ideal picnic spot.

ROUTE 3 - EXPLORERS & BUSHRANGERS - Hamilton Hume famously began his trek south from his property near Gunning in 1824 however he also explored extensive parts of the Goulburn Plains. Likewise, bushrangers including Ben Hall terrorised travellers along these key transport routes. Explore from Gunning to Collector and get a sense of this history.

ROUTE 4 - SAPPHIRE & GOLD COUNTRY - This region is interwoven with waterways many of which contain gold and precious gems. Whilst alluvial gold was prevalent, the area around Dalton is dotted with shaft mines chasing the elusive reefs.

ROUTE 5 - RIVER TO RIVER - Boasting stunning views of the Tablelands rolling hills this journey spans the Sydney Water Catchment from Crookwell to Wollondilly River country.

FOR FULL DETAILS OF ALL SCENIC AND HISTORIC DRIVES GO TO WWW.VISITUPPERLACHLAN.COM.AU UNDER EXPLORE.

PEDAL POWER



The Southern Tablelands can boast quiet roads, beautiful scenery and undulating landscapes that make it perfect for cycling.

Whether you are a passionate cycling enthusiast looking for a challenge or an adventurous family looking for great weekend activity, the Southern Tablelands has many great options for both short and long rides. Need some inspiration? Southern Tablelands Cycling have created a website www.southerntablelandscycling.com with maps and directions for scenic cycling trails all over the region with something for everyone no matter your level of fitness or experience.

Why not check out one of these great trails:

- Crookwell to Taralga - 42.7km through beautiful Mt Rae forest.
- Collector to Gunning - 43km over the magnificent Cullarin Range.
- Gunning to Dalton Return - 23.1km of easy riding through picturesque countryside.



For directions and maps see www.southerntablelandscycling.com

EVER TRIED GEOCACHING?

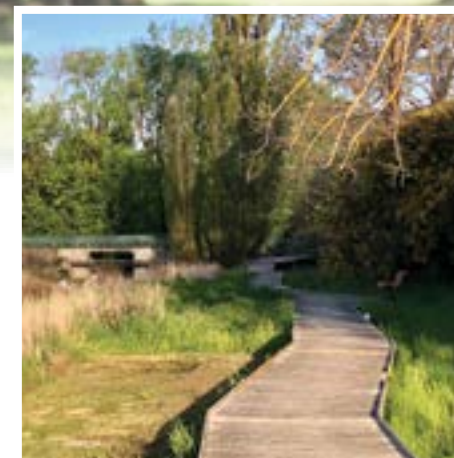


While you are out and about why not try your hand at geocaching, it's the modern version of hide and seek and fun for the whole family. There are geocaches all over the Southern Tablelands - how many can you find?

For location clues check out one of these websites

Geocaching
www.geocache.com
Geocaching Australia
www.geocaching.com.au
Opencaching
www.opencaching.de
Navicaching
www.navicaching.com
Terracaching
www.terraching.com

STRETCH YOUR LEGS



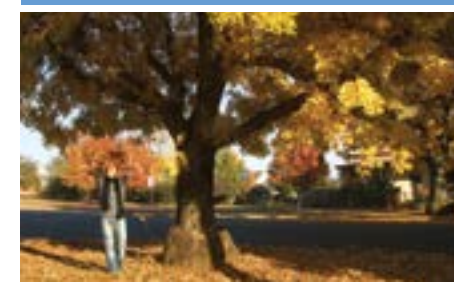
There is no better way to explore a region than on foot, the slower pace allows you to take in the sights, sounds and smells and the Upper Lachlan region offers some fantastic walking opportunities from self guided historical walks to picturesque strolls through nature conservation parks that are teeming with native birdlife.

GUIDED WALKS

The volunteers of the Crookwell, Gunning and Taralga Historical Societies would be delighted to provide a guided tour of their village and point out the many interesting buildings, locations and artefacts whilst regaling you with the stories that bring history to life.

NATURE WALKS

The region features a network of national parks, reserves and conservation areas for those that like to get off the beaten track. For more details see the Explore Nature section of this guide on page 18.



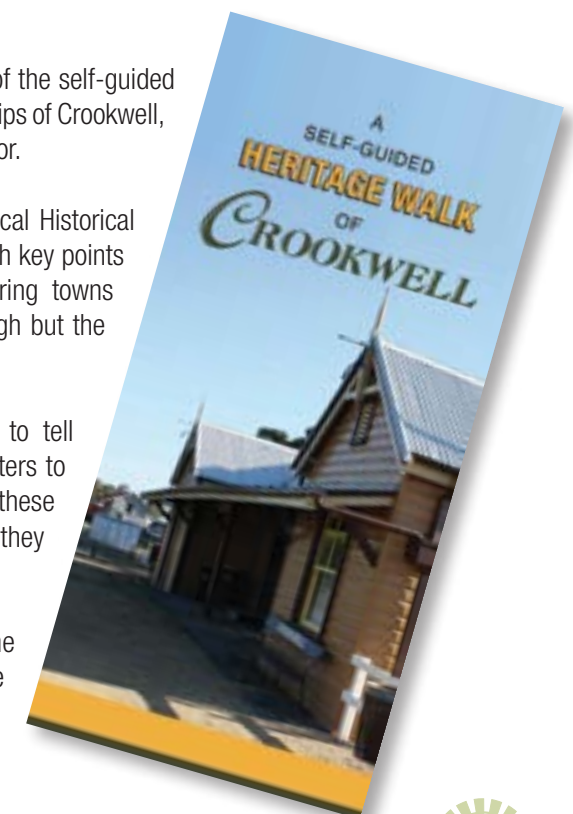
SELF-GUIDED WALKS

Discover at your own pace with one of the self-guided walks that are available for the townships of Crookwell, Taralga, Gunning, Laggan and Collector.

Developed in conjunction with the local Historical Societies, these walks are packed with key points of interest throughout these pioneering towns of Southern NSW where life was tough but the people were tougher.

Each township has its own stories to tell from bushrangers to explorers, squatters to railwaymen, come and learn about these people, their legacy and the place they called home.

Self-Guided walks are available at the Visitor Information Centres around the Shire - see the inside front cover for locations and contact details.



SUGGESTED ITINERARIES

Share your experience #visitupperlachlan  

Whether you have a half a day or a few days to explore this wonderful part of the New South Wales Southern Tablelands, here are just a few ideas of how you can spend your days enjoying the sites, sounds and characters of the Shire of Villages. Check out our full range of suggestions at www.visitupperlachlan.com.au where you can download a descriptive itinerary of each suggested experience.



FULL DAY - SAVOUR THE SOUTHERN

8.30am - Dine in the fresh air with a leisurely breakfast at Kiki's in the Grove

10.00am - Sample award winning wines at Collector Wines cellar door

12.30pm - Enjoy home baked treats with your lunch at Merino Café Gunning

1.30pm - Walk off the mornings indulgences by taking the Self Guided Gunning Town Walk before heading off to Crookwell.

3.00pm - Time for a great coffee at Café Zestt in the heart of Crookwell

8.00pm - Finish the day at The Argyle Inn in Taralga which was awarded a "Hat" in the 2018 Good Food Guide awards for an exceptional regional produce offer.

HALF DAY - RETAIL THERAPY

9.00am - The famous Laggan Markets run the 3rd Saturday of each month and a warm welcome from the locals is a great way to start your retail therapy!

11.00am - After you have grabbed some home baked morning tea at the markets make your way to Crookwell and check in at Lindner Quality Socks to see how socks are made the "right" way!

11.45am - Don't stop yet, there is plenty more to see before lunch including the magnificent Arcadia Crookwell with an eclectic range of micro-retailers all under the one roof. You will find something for everyone from babies wear to birthday presents to wedding gifts including an outfit to wear.



FULL DAY - DISCOVERING HISTORY

10.00am - The Taralga Historical Society Museum is simply one of the best regional experiences of it's kind and there is no better place to start your history quest.

12.30pm - Arrive in Crookwell in time for lunch and then head to the Visitor Information Centre to pick up a copy of the Self Guided Crookwell Town Walk. The walk takes you past all of the key landmarks in this beautiful Tablelands town.

3.30pm - Gunning was once the "Limit of Settlement" and this historic transport hub has stories to tell, especially in the local cemetery.

FULL DAY - FAMILY FUN

9.00am - Depart your Crookwell accommodation and head on out to Taralga via Laggan, take your time to enjoy the countryside in the morning light.

9.45am - Depart Taralga having grabbed your picnic supplies and head on out to Wombeyan Caves for a guided cave tour at 10.30am.

1.00pm - After exploring the underworld you will definitely need to find a shady spot in the valley to enjoy your picnic before heading back to Taralga

2.30pm - Arrive at Taralga Wildlife Park that showcases a large collection of native and exotic wildlife including a number of farm animals with miniature ponies, miniature cattle, pigs, sheep and a whole lot more



No matter where your passions lie - art, history, food, shopping, sightseeing, we have a suggested itinerary for you. Travelling in a large group? Why not make contact with the friendly staff at the Crookwell Visitor Information Centre (02) 4832 1988, who are experienced at co-ordinating exciting packages.

GROUPS & FUNCTIONS

Share your experience #visitupperlachlan  

A Country Wedding Binda

LIVE, WORK, INVEST

Share your experience #visitupperlachlan  

OFFICIALLY KIND & SAFE

The Upper Lachlan Shire has been ranked the 10th kindest Local Government Area in Australia by the Bond Universities "Happiness Project" as well as scoring 9.7/10 for safety. Two great reasons to consider making this region your home and enjoying all that country life has to offer



LAGGAN HALL

The Laggan Hall was built in 1926 and is located in the quaint little village of Laggan approximately 10 minutes from Crookwell. The hall is a great space to rent for family events or large group gatherings, offering a fully equipped kitchen and bathrooms on site surrounded by the rolling hills of the Upper Lachlan Shire.

Address: Peelwood Rd Laggan
Phone: 02 4837 3244
Email: suetownsend249@gmail.com

Create great memories with friends and family, beautiful weddings, fun family reunions, educational tours or just relaxing together, the choice is yours.

Looking to organise a memorable get together that your friends, family or colleagues will rave about? The towns and villages of the Southern Tablelands offer everything from spectacular wedding venues to flexible meeting spaces, guided town tours to bare foot bowls, wine tastings to sumptuous catering, no matter what your function or group tour the region offers options to every taste and budget.

Are you a tour organiser? Contact the Crookwell Visitor Information Centre for a copy of the Group Touring directory that highlights all of the tour options that only pre-booked groups can access.



The staff of the Crookwell Visitor Information Centre specialise in helping group organisers put together packages, arrange accommodation, transport, catering, everything you need for a memorable event. Phone 02 4832 1988 for professional and friendly service.



TARALGA GENERAL STORE

Taralga General Store is your one stop convenience store located in the heart of historic Taralga. We stock an array of fresh produce, grocery items and snacks, along with local oils, jams, honey and giftware.

Browse through our display of Taralga Historical Society books, or just pick up a newspaper or some ice for the weekend.

Come and enjoy our historic town and be sure to stop by for some good old fashioned service with a smile.

Address: 34 Orchard St Taralga
Phone: 02 4840 2831
Email: malbec@bigpond.com.au



PARSONS GENERAL STORE

The General Store in Tuena has been run by the Parsons' family since 1886 and the current store is magnificent nod to the past but has everything the modern traveller needs – camping and fossicking supplies, souvenirs, fuel, ice, groceries, pies & sausage rolls, coffee, liquor, tourist information and more.

Why not stay in Tuena - the nearby Tuena Campgrounds offer powered and unpowered sites with hot showers at very affordable rates. Try your hand at gold fossicking while you are there, you never know your luck.

OPEN : Sat, Mon, Wed, Fri 9.30am – 7pm
Sun, Tues, Thurs 2pm – 7pm
ADDRESS: Bathurst St, Tuena
PHONE : 4834 5235
EMAIL: jenelletuena@gmail.com

TIME FOR A CHANGE?

Ideally located just 2.5 hours from Sydney and 45 minutes north of Canberra, the region offers a wide range of services to make life enjoyable from education and healthcare to sporting and artistic pursuits.

Enjoy the four seasons in all their glory as you settle into a warm and welcoming community. There is always something to do and see from award winning regional food and wine to a round of golf with friends or simply a regular morning coffee at a quaint café.

For more information on the wonderful opportunities to live, work and invest in the Shire go to www.upperlachlan.nsw.gov.au

REGIONAL MAP

TRAVEL DISTANCES TO CROOKWELL, GUNNING & TARALGA

Location	Crookwell	Gunning	Taralga
Albury	356 km	312 km	403 km
Batemans Bay	190 km	174 km	191 km
Bathurst	143 km	186 km	144 km
Blayney	123 km	166 km	182 km
Boorowa	86 km	101 km	178 km
Bowral	123 km	126 km	121 km
Canberra	111 km	67 km	135 km
Cowra	143 km	162 km	181 km
Dubbo	303 km	346 km	344 km
Goulburn	45 km	47 km	46 km
Katoomba	197 km	243 km	168 km
Melbourne	681 km	637 km	728 km
Mittagong	128 km	131 km	126 km
Oberon	128 km	172 km	98 km
Orange	158 km	239 km	199 km
Sydney CBD	240 km	243 km	238 km
Wollongong	182 km	185 km	180 km
Yass	82 km	37 km	120 km

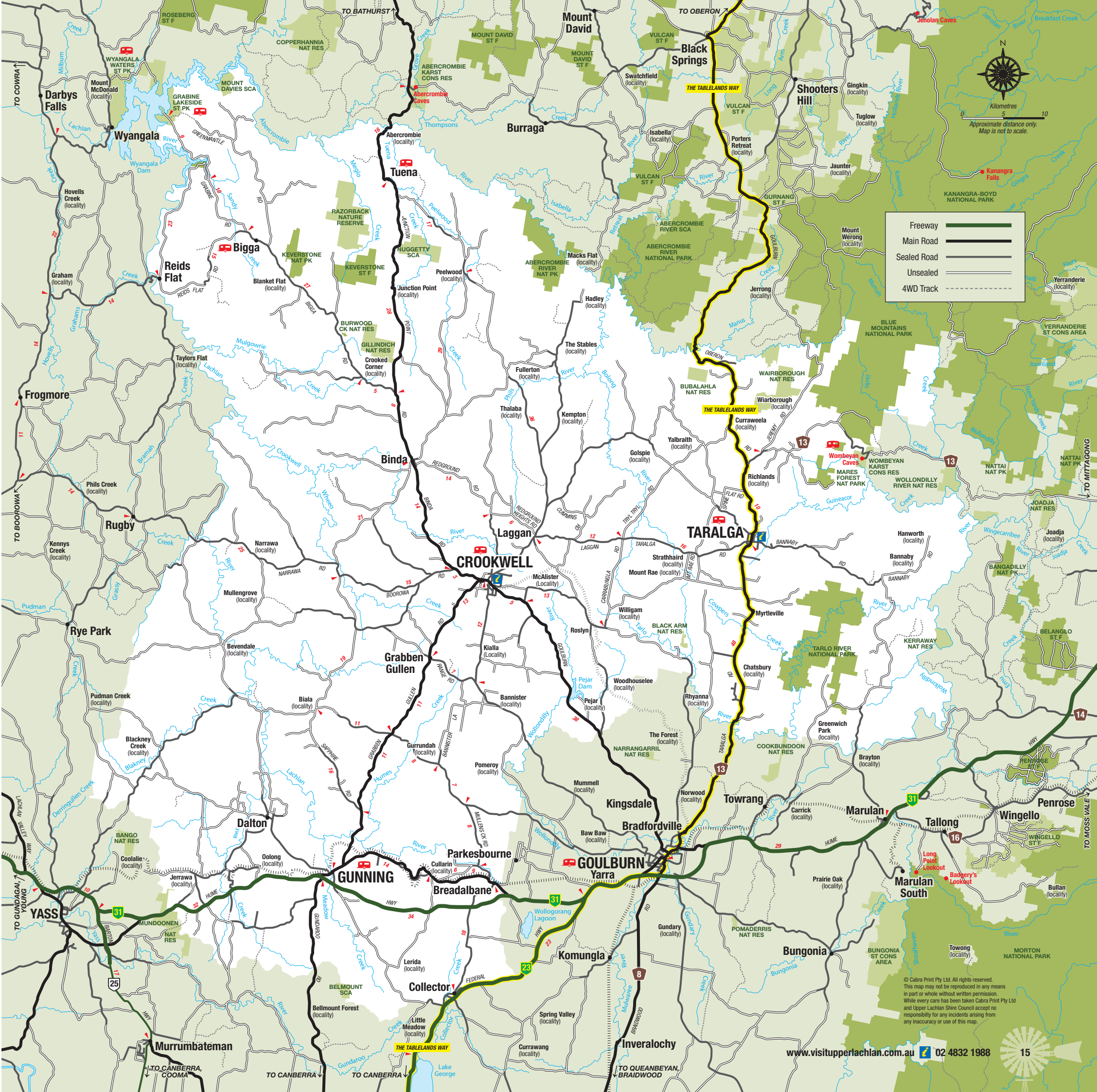
DISTANCES AND ROAD CONDITIONS FROM CROOKWELL

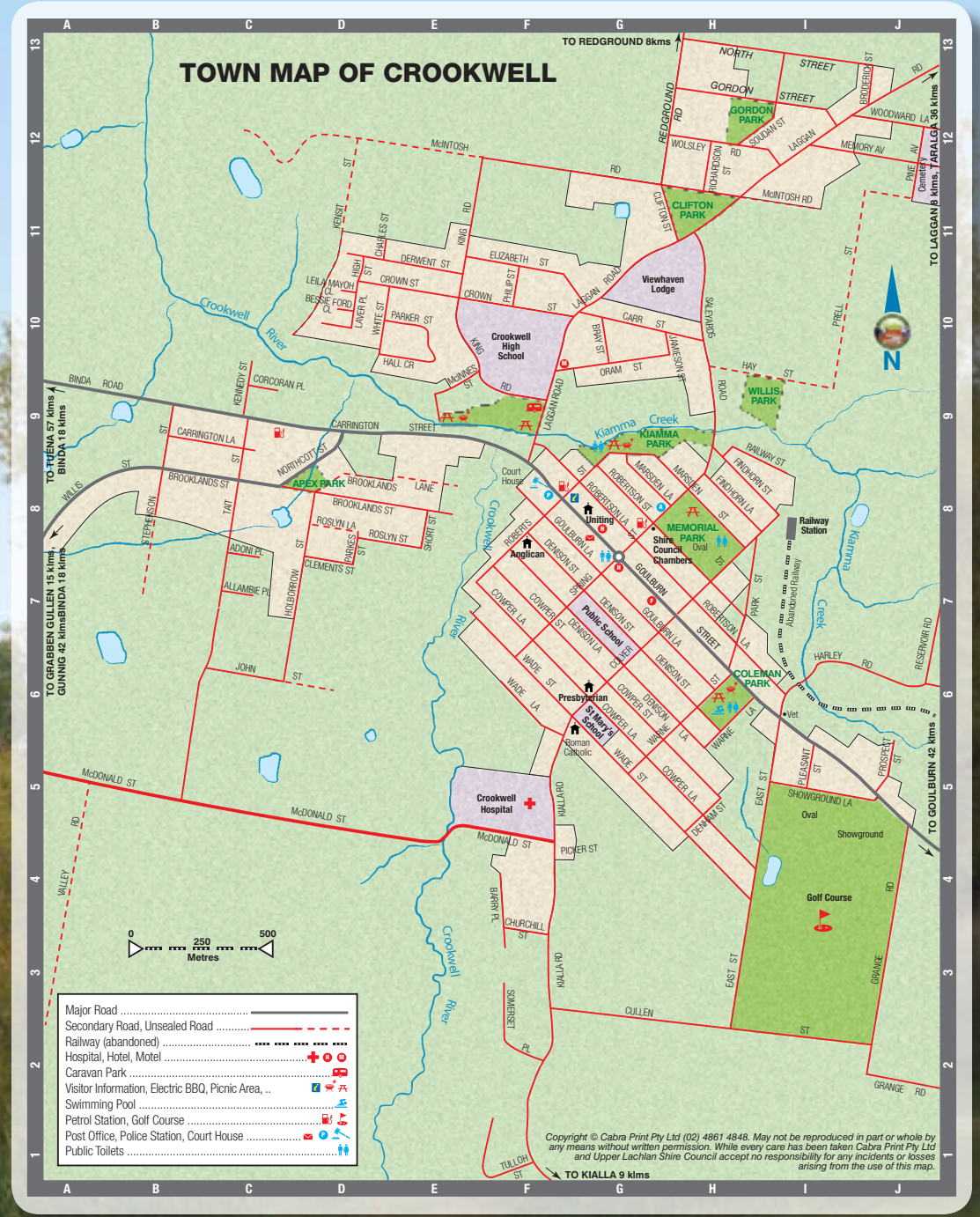
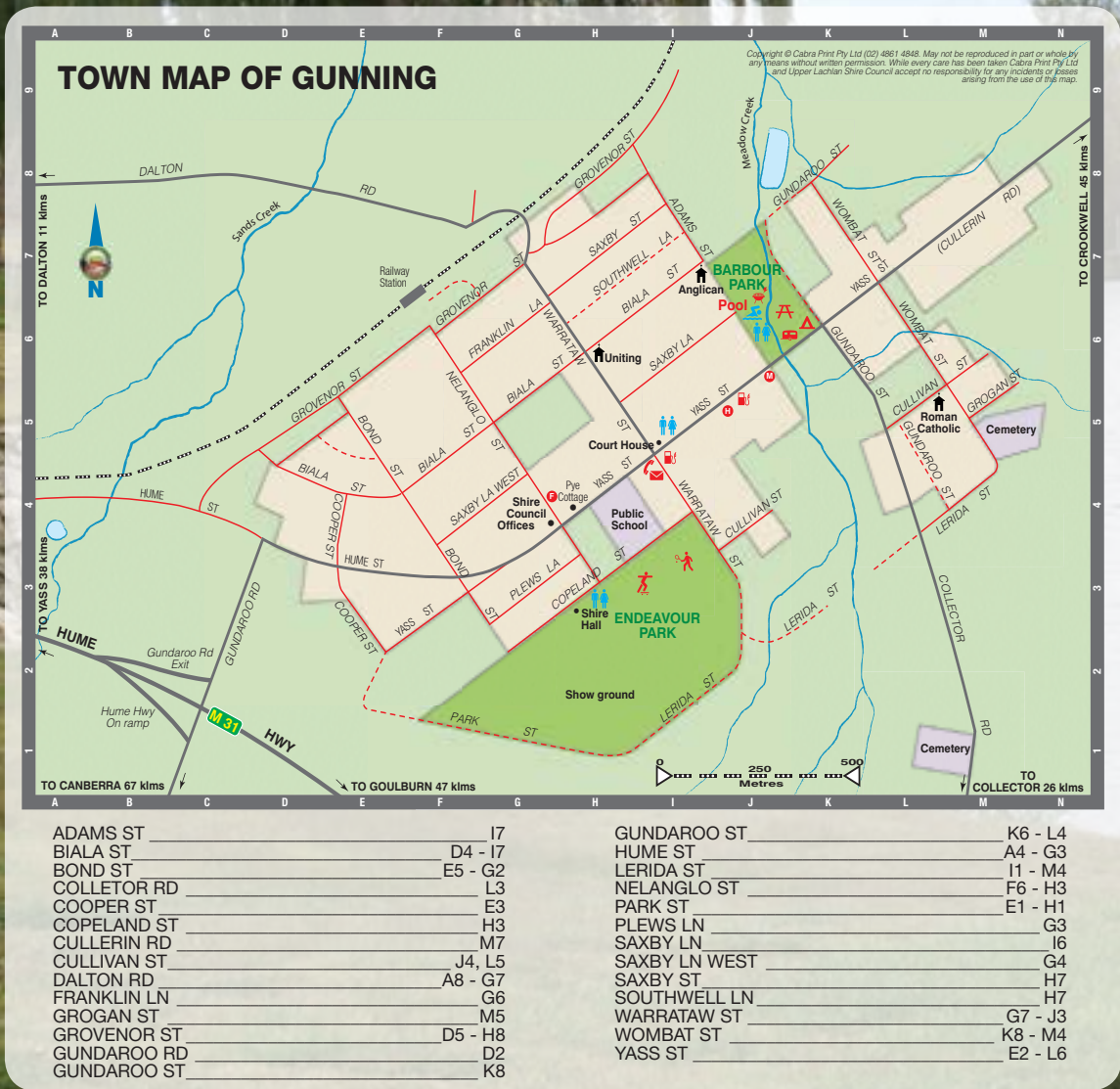
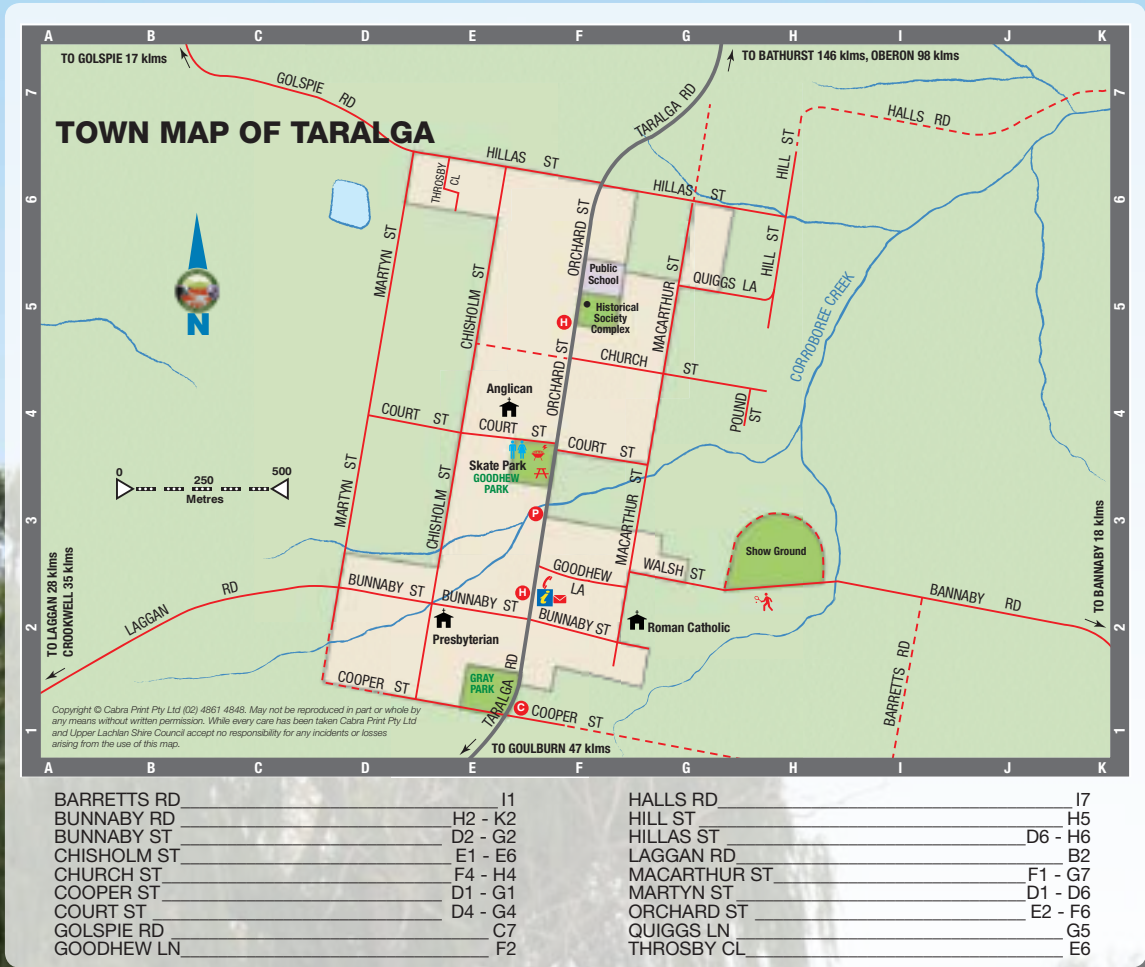
Location	Distance
Binda	18 km
Bigga	58 km
Collector (via Breadalbane)	68 km
Grabben Gullen	11 km
Grabine State Park	83 km (22 unsealed)
Gunning	42 km
Laggan	8 km
Taralga	36 km
Tuena	57 km

LONG TERM WEATHER AVERAGES (Taralga Post Office)

	Jan	Feb	Mar	Apr	May	Jun	Jul	Aug	Sept	Oct	Nov	Dec	Ann
Mean Max °C	26.1	24.8	22.5	18.6	14.4	11.2	10.3	11.9	15	18.3	21.4	24.3	18.2
Mean Min °C	11.9	12.1	9.8	6.1	3.2	1.7	.6	1.2	3.1	5.3	7.7	9.8	6
Mean Rainfall (mm)	72.3	70.3	66.9	58.7	59.4	75.5	66.4	67	61.5	70.1	68.1	66	802.2
Mean Rain Days	6.7	6.9	6.6	6.3	6.9	8.9	8.7	8.2	7.8	7.7	6.8	6.5	88

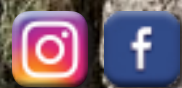
Source: Bureau of Meteorology Oct 2014





EXPLORE NATURE

Share your experience #visitupperlachlan



Mares Forest Creek Canyon

GET OFF THE BEATEN TRACK

As you explore the traditional lands of the Wiradjuri, Gundungurra and Ngannawal peoples you will find a wonderland of fauna and flora conserved through a network of national parks, reserves and conservation areas. Keverstone National Park and Gillindich Nature Reserve are easily accessible by travellers to the region north of Crookwell towards the villages of Bigga and Tuena.

Both Keverstone and Gillindich allow bushwalking, cycling, picnics and bush camping with the National Park also permitting horse riding. The area is home to many vulnerable species including the Spotted-tailed Quoll, Gang Gang Cockatoo and the Powerful Owl.

Keverstone National Park is in two sections and can be accessed by either Mount Wells Trail or Wick Wack Road both off Bigga Road whilst Gillindich Nature Reserve is located on Junction Point Road approximately 30km north of Crookwell just after Bigga Road.

From underground wonders to eagles on the wing, the Southern Tablelands offers a wealth of outdoor adventure.

WHERE TWO RIVERS MEET

Lake Wyangala, at 2.5 times the volume of Sydney Harbour, is a haven for pleasure boating, canoeing, swimming, water skiing, sailing, bushwalking, fishing and leisurely picnics. Located just 80km north-west of Crookwell, Lake Wyangala and Grabine Lakeside are situated where the Lachlan and Abercrombie Rivers meet and have been dammed to form the lake. The surrounding countryside boasts a vast array of flora and fauna, so after you have enjoyed the cool mountain waters make sure you explore the back country as well.

DISCOVER THE UNDERWORLD

Imagine a place so ancient that it was old before the first dinosaur walked the earth. Over millions of years a maze of underground passages, streams and caverns has developed. Known to the aboriginal people for tens of thousands of years, they were re-discovered by Europeans in 1828 when explorers stumbled across a vast opening leading into the amazing depths below.

Wombeyan Caves feature vast caverns adorned with striking and delicate formations in a range of sizes, shapes and textures. These limestone caves are both remarkable and beautiful.

For camping in the great outdoors see page 34.
For great fishing spots see page 27.

Meet the Locals

One of the joys of travelling through regional New South Wales is the ability to meet the locals like David from Wombeyan Caves.

Meet some of the locals and read their stories on our website, get an understanding of their passion for what they do, why they love the region they call home and then come and meet them in person!

www.visitupperlachlan.com.au



REFLECTIONS HOLIDAY PARKS

Peaceful, picturesque and with sunsets to leave you breathless, Reflections Holiday Parks Grabine Lakeside is ideal for enjoying all the adventures Wyangala Dam has to offer. A scenic drive from Crookwell, Boorowa and the wider Upper Lachlan Shire, a pilgrimage to Grabine Lakeside is the ultimate antidote for the stresses of the everyday. Bring your boat; it's easy to get out on the water. Bring your rod; the fishing here is awesome. And bring your kids too; they'll remember this adventure always.

This large park offers bush camping, powered sites and a range of cabins too. Sites are dog-friendly so you can bring along your four legged friend. The park has all the facilities you'll need including a general store, laundry, BBQs and amenities.

Accommodation types:

Cabins. Powered and unpowered sites.

Address: 2453 Grabine Rd Bigga 2583

Phone:

02 4835 2345

Email:

grabinelakeside@reflectionsoliday.com.au

www.reflectionsolidayparks.com.au



WOMBAYAN CAVES

Hidden in a peaceful sheltered valley just one hour from Goulburn, the Wombeyan Karst Conservation Reserve offers guided and self-guided tours of spectacular limestone caves featuring vast caverns adorned with striking and delicate formations.

Enjoy the diverse range of flora and fauna. Follow one of the walking trails that lead you to spectacular canyons, lookouts and waterfalls.

A range of accommodation styles is available including cottages, cabins, dormitories, caravan and camping sites along the beautiful valley floor so why not stay a while and discover all that Wombeyan has to offer.

OPEN : Park Open 24/7, Caves open 9am – 4pm every day except Christmas Day

ADDRESS: Wombeyan Caves Rd,
Wombeyan Caves (via Taralga)

PHONE : 02 4843 5976

EMAIL: wombeyan.caves@environment.nsw.gov.au

www.nationalparks.nsw.gov.au



BIRDS, BIRDS, BIRDS!

The Upper Lachlan Shire is blessed to be frequented by a huge variety of birdlife from majestic raptors such as Wedge Tailed Eagles and Nankeen Kestrels to the magnificently adorned Superb Lyrebird and Eastern Rosella to wonderful water birds such as the Black Cormorant and Australasian Grebe. There have been almost 200 species of bird identified as being residents or visitors to the Upper Lachlan and this includes many rare birds such as the Powerful Owl and Turquoise Parrot. A great place to view a large variety of birds is the Todkill Park Bird Hide in Crookwell. Todkill Park is located on Goulburn Road as you enter from the south east, the bird hide is on the edge of the dam and can be accessed via the hockey fields. Public access is available 24/7.

SAVOUR

Share your experience #visitupperlachlan  



Collector wines



The Argyle Inn

Indulge your senses with a selection of regional food and wine that demonstrates the strong connection that this countryside has with great produce. Savour everything from simple hearty home-style cooking to the best of the best in a la carte dining experiences that will surprise and delight.



Taralga Hotel

KINGSDALE WINES

Kingsdale Wines is a boutique winery specialising in flavourful cool climate wines. The vineyard has a unique combination of soils and climate which contribute to the quality of the wines produced. Varieties grown include Sauvignon Blanc, Semillon and Shiraz. Most of the wines on sale at Kingsdale have been grown, vintaged and bottled on the premises. Wine tasting for small groups is free and if we are not too busy, why not

ask for a tour of the winery to see how we make our wines. You can also enjoy a cappuccino while sitting on the verandah overlooking Lake Sooley.

Open: Cellar door open every weekend from 10am – 5pm and most weekdays (please phone first on weekdays)
Address: 745 Crookwell Road, Goulburn
Phone: 02 4822 4880
Email: admin@kingsdale.com.au

www.kingsdale.com.au

The Southern Tablelands has been a source of great food since the early days of European Settlement and that tradition has continued. Local supplies of beef and lamb are a highlight of the menus which range from classic country counter meals to gourmet delights boasting flavours and inspiration from all over the world.

The mild summers and cool winters of the Southern Tablelands produce excellent cool climate wine grapes with a number of wineries across the region. You can purchase local wines in many of the regions restaurants, at a cellar door or at the Crookwell Visitor Information Centre.



Eat, Drink, Play Shop!! Kiki's is the place to stop!

- Great Coffee
- Great Food
- Gourmet Pies
- Great Views
- Dine in or take away
- Local Deli & Farmgate shop
- Children's playgrounds
- Disabled access

- Local Produce
 - Coach & Trailer Parking
 - Fully Licensed
- Specialising in group bookings, private & corporate functions

Open: 6 Days 9am to 4pm
closed Wednesdays
Open: 7 days and extended hours during snow season see website for details
Address: 5796 Federal Highway, Collector

Phone: 4848 0098
Email: info@kikisinthegrove.com.au

www.facebook.com/kikisinthegrove

www.kikisinthegrove.com.au

COLLECTOR WINES

Taste the Collector wines in the beautiful ca. 1829 building. Sip a warming wine by the fire in winter or enjoy our award winning Chardonnay on a warm summer's day.

The wines are hand-made for balance, character and depth of flavour, offering Riesling, Marsonne, Pinot Meunier, Gruner Veltliner, Shiraz, Sangiovese and Rosé.

Elegant wines that stand the test of time. Seek us out at the cellar door, 40 minutes

from Canberra and 2.5 hours from Sydney. We are located one minute off the Federal Highway in downtown Collector, next to 'Some Cafe'.

Winner - Best Small Cellar Door,
Canberra District - 2017 Gourmet Wine Cellar Door Awards.

7 Murray Street, Collector NSW 2581
Tel: 0415 991 078

Web: www.collectorwines.com.au
email: collect@collectorwines.com.au

Open: 10am – 4pm Thu-Sun & most pub hols.

www.collectorwines.com.au

THE TARALGA HOTEL

Built in 1876 The Taralga Hotel is a beautiful, heritage listed bluestone building on the winding road between Goulburn and Oberon.

Serving pub classics and on-trend seasonal menu items with a great beer list. Take a pit stop in the bright and breezy beer garden.



THE TARALGA HOTEL
-1876-

Address: 24 Orchard St Taralga NSW 2580
Phone: 02 4840 2007
Email: info@thetaralgahotel.com.au

www.thetaralgahotel.com.au

SHOPPING

Share your experience #visitupperlachlan  



Lindner Quality Socks



VILLAGE TREASURES

The region is a network of small towns and villages with unique shopping experiences you won't find in the big malls. Looking for a gift, a new outfit or some personal pampering? Be sure to check our specialty shops right across the Shire.





Family Sock Makers

Since 1730

Andrew Lindner
MASTER SOCK MAKER

Lindner Quality Socks are proud to make the finest quality products with locally sourced materials using traditional techniques and finishing by hand.

FACTORY AND SHOP OPEN TO VISITORS Monday - Friday 9am - 4:30 pm
SHOP ONLY Saturday 9:30 am - 12:30pm

6 Goulburn Street, Crookwell, NSW (02) 4832 0202
 [lindnersocks.com.au](https://www.lindnersocks.com.au)





ARCADIA CROOKWELL

Our unique business brings to you multiple shops all contained in a beautifully restored building in the centre of Crookwell. Antiques and old wares; repurposed furniture; ladies clothing and jewellery; baby clothing; handmade soaps and candles; organic teas, chocolates and lollies; alpaca scarves; giftware and homeware.

OPEN : Mon, Thurs & Fri
10.00am – 4.00pm
Sat & Sun 10am – 3pm
ADDRESS: 77 Goulburn St, Crookwell
PHONE: 0407 254 954
EMAIL: arcadia.crookwell@yahoo.com.au

www.facebook.com/arcadiacrookwell

Tired of the hustle and bustle of city shopping? Come and experience shopping as it was meant to be!

From antiques to locally made socks, the region boasts a range of specialty retailers who offer personalised service and a range you won't see in the city shops. There are outlets in most of the towns across the area so take some time to explore, you never know what you will find.



Arcadia Crookwell



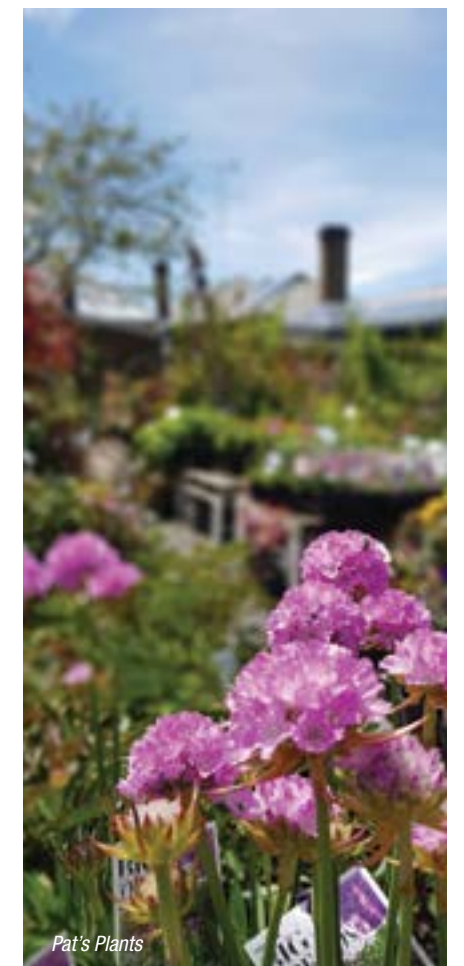
TEA HOUSE GALLERY

The Tea House & Gallery is an Asian styled tea and art shop within the heart of Crookwell. The Tea House & Gallery stocks local and international arts and crafts as well as fine and rare teas from China, Taiwan and South Korea.

We exhibit Asian brush paintings, ceramics, Korean Hanji (a traditional paper craft), glass and wooden items. As well as sculptural pieces by local artists and cards and small unique gifts.

At the Tea House & Gallery sample and purchase exceptional and artisanal teas sourced by us in China, Taiwan and South Korea. All teas are organically and sustainably grown and processed where possible

Open: regularly and by appointment
Address: 41 Cowper Lane Crookwell
Phone: 0403 981 055



Pat's Plants

For a complete listing of shopping experiences see page 39.

ARTS & CULTURE

Share your experience #visitupperlachlan  



Taralga Art Show Workshops



TARALGA ART SHOW

The annual Taralga Art Show is a vibrant exhibition which showcases works by local and regional artists. Visitors will see works including paintings, woodwork, sculpture, photography, ceramics and much more. Creative workshops for both adults and children are held on Saturday. Opening night is an annual event for the town and everyone is welcome on the Saturday night from 6pm.

When: June Long Weekend
10am – 4pm on Saturday & Sunday,
10am – 3pm on Monday
Where: Taralga Memorial Hall
Orchard St, Taralga
Phone: 02 4840 6101

www.facebook.com/TaralgaArtShow

Pablo Picasso said -
“The purpose of art is washing the dust of daily life off our souls” so come and cleanse yourself with some wonderful literature, music and visual art.

The district is home to many talented artists including writers, painters, photographers, sculptors, musicians, actors, poets and more who all contribute to the social fabric of life in the Upper Lachlan Shire. You can enjoy and engage in their passions by visiting an exhibition, attending a performance or joining in a social night of poetry and music.

For details on regular and upcoming opportunities simply follow our facebook page Visit Upper Lachlan – The Shire of Villages.



TEA HOUSE GALLERY

Tea House & Gallery in the heart of Crookwell is an Asian inspired space for the exhibition of art and craft work by local and international artists.

Discover Chinese brush paintings and scrolls, ceramics and glass work. From Korea we exhibit Hanji, a traditional paper craft for functional and art pieces.

Add to this fine and rare teas hand sourced from Korea, Taiwan and China for you to sample and purchase.

You may learn about these arts and crafts through regular workshops, floor talks and education days. Learn about teas from Stephen Carroll our Korean & Chinese Certified Tea Master.

Experience the tranquillity of The Tea House & Gallery and its Zen inspired garden.

Open: regularly and by appointment
Address: 41 Cowper Lane Crookwell
Phone: 0403 981 055

ANIMAL ENCOUNTERS

Share your experience #visitupperlachlan  



Taralga Wildlife Park

Connect with an amazing range of animals from free ranging wallabies to colourful birdlife from around the world. The region is home to a plethora of native and exotic wildlife that can be discovered through a nature walk or an organised tour of a purpose built animal encounter.



Native and exotic animals and birds
Friendship Farm

257 Bannaby Road
Taralga NSW
Enquiries 0419 014 540

NOW OPEN!



TARALGA WILDLIFE PARK

Thursday to Monday
10am to 4pm
Every day during school holidays

Whether you are wondering through our native landscapes such as Wombeyan Karst Reserve, stretching your legs on a town walk or visiting a purpose built animal encounter, the chances to engage with native and exotic wildlife are endless. The Upper Lachlan is prime farming land for sheep, cattle, alpacas and poultry however the area is also home to hundreds of bird species, kangaroos and wallabies, ducks and platypus just to name a few.

You can either go on the search yourself or visit one of the purpose built animal encounters such as Taralga Wildlife Park or the Alpaca Farm Experience. For full details go to www.visitupperlachlan.com.au or call 02 4832 1988 – 7 days a week



Alpaca Farm Experience

PARKS, GARDENS & MORE

Share your experience #visitupperlachlan  



Barbour Park

Markdale Station

SUPERB GARDENS

The cold climate of the Southern Tablelands produces fabulous ornamental gardens with spectacular spring blooms and gorgeous autumn colour. Not to be outdone however, the region also supports temperate climate plantings with large amounts of lavender grown in the area.

During Autumn, Spring and Summer there are often different gardens that visitors can enjoy. Contact the Visitors Information Centre for the schedule of openings.



Relax and unwind with a picnic for two, take the kids for a swim or just enjoy a good book. The townships and countryside of the Southern Tablelands offer a vast array of options to just unwind.

IDEAL PICNIC SPOTS

With magnificent waterways and picturesque countryside there are many great picnic spots around the region. Here are a few of our top picks:

- **Pejar Dam** – Goulburn Road – half way between Goulburn and Crookwell on the Wollondilly River, the rest area provides BBQs, picnic shelters and toilets.
- **Barbour Park** – Yass Street Gunning – nestled alongside Meadow Creek, Barbour Park offers toilets, picnic tables, BBQs and play equipment.
- **Goodhew Park** – Orchard Street Taralga – conveniently located on the main street of Taralga, Goodhew Park features toilets, rotunda, playground and skate park.
- **Memorial Park** – Spring Street Crookwell – featuring a stunning rose garden and memorials to the

servicemen of the district, Memorial Park also has toilets, a gazebo and seating.

- **Coleman Park** – Goulburn Street Crookwell – located on the main street adjacent to the public swimming pool, the park offers BBQs, covered picnic tables, playground and toilets.

- **Pat Cullen Park** – Roberts Street Crookwell – situated beside Kiamma Creek, Pat Cullen Park features wood carvings by Welshman Adam Humphries and offers seating and toilets.

SHOWGROUNDS

The local showground has always been an important part of the community and we are blessed with very active show societies with grounds that not only host the local agricultural show but also a variety of horse events from team sorting and penning to mounted games and more.

Keep an eye on our calendar of events or visit the individual show society websites.

Crookwell
www.crookwellshow.com.au
 Gunning
www.gunningshow.com.au
 Taralga
www.taralgashowground.com



CRYSTAL BROOK GARDENS AND LAVENDER FARM

“A small farm with a lot of surprises”

In summer bees and butterflies frolic amidst the heady scent of lavender, roses and salvias. Autumn brings a kaleidoscope of colour: in winter there is quiet in the air with frosty days and warm fires...and spring emerges with bulbs galore and bursting buds ready for the purple haze of lavender

Function Centre – Speciality Shop – Seasonal festivals - Parties, anniversaries,

business meetings – soaps, creams, essential oils, linen – selection of homemade culinary products – Paris Cafe - morning and afternoon tea – lunch and dinner – plants in season

OPEN : Oct to May – Sat & Sun 11am til 5pm
 all year by appointment

ADDRESS: 257 Tyrl Tyrl Rd, Laggan

PHONE: 02 4843 3333

EMAIL: judith@lavenderatlaggan.com.au

www.lavenderatlaggan.com.au

Seeking some sporting action on your holiday? Whether you are keen angler, a social tennis player or an aspiring professional golfer, all of our towns and villages have something to offer.

FISHING & BOATING

The Upper Lachlan Shire is the home to the headwaters of the Lachlan and Wollondilly Rivers and is bordered by the Abercrombie River to the north. This means there are literally hundreds of waterways spread across the region and many of them offer great fishing spots from Lake Wyangala in the north to Pejar Dam the south, the Lachlan River to the west and the Wollondilly in the east.

POPULAR FISHING SPOTS

- **Crookwell Water Supply**
 – Trout, Golden Perch, Silver Bream
- **Pejar Dam** – Trout
- **Lake Wyangala**
 – Trout, Catfish, Silver Perch, Golden Perch, Murray Cod
- **Abercrombie River**
 – Trout, Silver Perch, Macquarie Perch



GOLF

There are four wonderful country golf clubs in the region each with their own character. Located in Bigga, Crookwell, Gunning and Taralga each of the courses are maintained by a dedicated band of volunteers and they are more than happy to welcome guests to enjoy the fruits of their labours.

ENJOY A GOOD BOOK

There are two fantastic libraries in the region that offer a great selection of reading material, CDs and DVDs as well as free internet access.

Crookwell Library - Denison Street, Crookwell - Open Mon, Tues, Thurs & Fri 10.30am - 5pm, Wed 1.30pm - 5pm, Sat 10am - 12noon.

Gunning Library - Yass Street, Gunning - Open Tues - Wed 2pm - 5pm, Thurs 1pm - 5pm, Fri 10am - 5pm.

Crookwell Visitor Information Centre sell new and pre-loved fiction and non-fiction books so drop in a pick up a new read for your travels.

TAKE A SPLASH

There are well maintained public pools in both Crookwell and Gunning which are usually open from November to March each year. **Crookwell Pool** - Corner Warne and Goulburn Streets. **Gunning Pool** - Barbour Park, Yass Street.

DISCOVER HISTORY

Share your experience #visitupperlachlan  



Christ the King - Taralga



LOCAL HISTORICAL SOCIETIES

**Crookwell & District Historical Society
Crookwell Memorial Centre**
Denison St, Crookwell NSW 2583
PO Box 161 Crookwell 02 4832 0630
E: crookwellhistosoc@yahoo.com.au
Open Tues/Thurs/Fri 11am - 4pm.

**Gunning & District Historical Society
Pye Cottage Museum**
Yass St, Gunning NSW 2581
PO Box 3 Gunning 02 4845 8217
Open every 4th Sunday or by appointment.

**Taralga Historical Society
Taralga Historical Museum**
83 Orchard St, Taralga NSW 2580
02 4843 8122. Open most Sundays
1pm - 4pm or by appointment.
www.taralghistoricalociety.com.au

Walk in the footsteps of both the indigenous peoples of this land and early white pioneers as you explore the many natural and man-made wonders that preserve our history.

The indigenous Wiradujuri, Gundungurra and Ngunnawal peoples appear to have used these lands as travelling routes however with its proximity to the early colony and its strategic location the area was experiencing permanent European settlement within 20 years of the First Fleet.

Arable farm land and reliable rainfall are at the heart of the whole region and are reflected in much of the built and natural environment. When you add gold and silver, major transport routes and country ingenuity, famous authors and famous bushrangers you have a wonderful tapestry of stories with hidden gems everywhere - literally!



THE LURE OF PRECIOUS METALS

Many of the early visitors to the region were drawn by the lure of precious metals. From Dalton in the south to Tuena in the north, gold was the precious metal of choice.

Located on the road between Crookwell and Bathurst, you can still pan for gold at the Tuena public fossicking area, check out the Book Keeper's Cottage and get a bird's eye view of the gold fields from the suspension bridge.

The history of metal mining goes beyond gold and includes the beautiful little village of Peelwood, home to a copper, silver and lead mine from the 1870s. Peelwood sits in the beautiful Peelwood Valley and a visit to modern day Peelwood still reveals the chimney stack.

Just north of Gunning, the Dalton area was also mined for gold with multiple small but high quality deposits. Make sure you take a selfie with the iron horses of Dalton and then follow the Lachlan River north as it meanders through the country side, watch out for the troopers along that way!



CROOKWELL HERITAGE RAILWAY

The Crookwell Railway Station Precinct is a State Heritage Asset described as a significant pioneer rail branch line terminus and is well worth a visit in Colyer Street Crookwell.

The railway infrastructure and museum is maintained by the Goulburn Crookwell Heritage Railway. The group operate a variety of heritage NSW Railways trikes and are looking to the introduction of rail bikes. The group meets in Crookwell the third weekend of the month and new members are always welcome.

Open: 3rd Weekend of the month
Address: Colyer St, Crookwell
Facebook: crookwellrailway.
Email: crookwellheritagerailway@gmail.com

www.gchr.org.au

STRETCH YOUR LEGS

An historical walk is a great way to really understand the heritage of a town and get to know some of its colourful characters.

SELF GUIDED WALKS - there are self guided walk brochures available for Collector, Crookwell, Gunning and Taralga available from the local Visitor Information Centres and selected businesses.

GUIDED WALKS - the volunteers of the Gunning and Taralga Historical Societies would be delighted to provide a guided tour of their village and point out the many interesting buildings, locations and artifacts whilst regaling you with the stories that bring history to life.

TARALGA HISTORICAL MUSEUM

Come and see Taralga's Heritage

Research family history from our extensive library of families that have lived and worked in Taralga.

Visit many different buildings in our museum complex

- Church Museum
- Heritage Shed (shearing and Blacksmithing)
- Settlers Slab Cottage
- One room slab school
- Nissen Hut (military memorial)
- Dairy



Taralga Historical Society Inc.
Orchard Street Taralga

Bus groups are most welcome

Open Saturdays from 10am-2pm

or by appointment
call Graham Lambert

Phone 48438187

www.taralghistoricalociety.com.au

ACCOMMODATION

Share your experience #visitupperlachlan  



Abercrombie Ridge



MARKDALE STATION FARMSTAY BINDA NSW

On the Southern Tablelands of New South Wales, Markdale offers an out-of-the-ordinary experience to fire up the senses. Just 3 hours from Sydney and 90 minutes from Canberra, Markdale is a working sheep station in the Great Dividing Ranges with self catered farmstay accommodation for up to 24 people.

Guests can stay in the original 1850's 'Stone Cottages' or 'Shearers Quarters',

which have fully equipped kitchens, linen, heating, bbqs and wifi.

Explore the 6,300 acres and award winning Edna Walling garden, enjoy tennis, the pool and an evening by the fireplace.

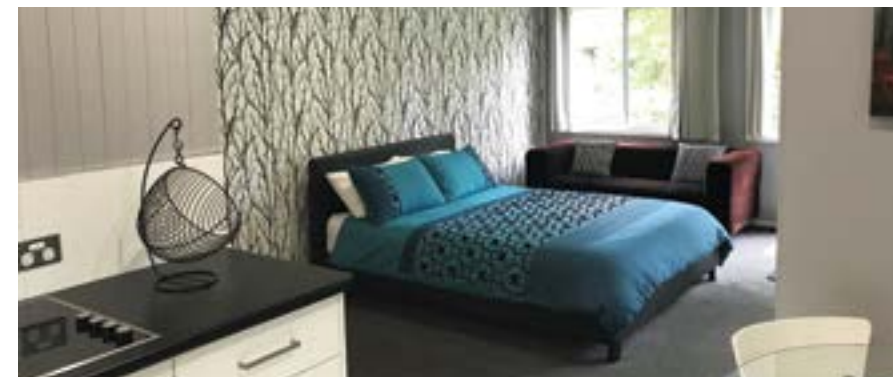
Type: Self Contained
Sleeps: up to 24 guests
Address: 462 Mulgowrie Rd,
Binda NSW 2583
Phone: 0418 868 830
Email: farmstay@markdale.com

See availability and book at www.markdale.com

Whether you choose one of our historic country cottages with a cosy wood fire, a cabin by the lake or a farmstay with views forever, you will be greeted with a smile and a warm welcome.

Accommodation in the region can offer not only a place to lay your head but an authentic country experience. Select from a wide range of options including traditional B&Bs, self contained cottages, motels, pubstays, cabins, farmstays and more. Spend your time off the beaten track in a secluded retreat or stay in the heart of a village within walking distance of cafes, clubs and pubs.

For the full range of accommodation options go to www.visitupperlachlan.com.au



RAVENSCROFT

Enjoy a luxurious stay in The Cottage on the grounds of Ravenscroft. Nestled in beautiful gardens, The Cottage is private and tastefully decorated. It has a fully equipped kitchen, ensuite bathroom, electric heating, TV and tranquil garden views. Use it as a base to escape to the country! Explore the day trips listed on our website, or enjoy the eclectic shopping and good food just a 6 minute walk into Crookwell Township. Conveniently located en route from the Central West to Sydney, The Cottage provides a cosy and comfortable stay to break up your trip.

A generous continental breakfast is included in the tariff. Make a booking through our website at www.ravenscroft.net.au and experience warm, country hospitality.

Type: Self Contained
Rooms: 1 Queen
Address: 16 Carrington St, Crookwell
Phone: 0438 447 333
Email: crookwellstay@gmail.com

www.ravenscroft.net.au



TOSHA'S PLACE

Tosha's Place is fully self contained, private and secure situated in a quiet part of the Crookwell township. The property offers views of the valley and scenic hills whilst being walking distance to the main street cafes, hotels and club. The cottage has a fully equipped kitchen with large dining table, separate lounge room, bathroom and second toilet making it ideal for family groups. Accommodates up to 12 people.

Type: Self Contained
Rooms: 1 Queen, 1 Double with Single Bunk, 3 Double futons
Address: 27A Hall Cres, Crookwell
Phone: 02 4832 1935
Email: toshasgran@bigpond.com



Luxury Escapes, Weddings & Events

Abercrombie Ridge is an exclusive country retreat that provides total privacy, seclusion and luxurious accommodation surrounded by 133 acres of natural bushland near Taralga NSW.

The property has uninterrupted views over the Abercrombie River Valley and Great Dividing Range, only 3 hours from Sydney or 1.5 hours from Canberra.

Phone 0405 632 009 or visit www.abercrombieridge.com.au



CLOVERLEIGH HOMESTAY

Situated 1.5km from the town centre among the fields and with a northerly aspect, "Cloverleigh" features an extensive garden and beautiful rural views. The guest area accommodates up to six people with their own bathroom and lounge/dining area. The house is centrally heated and a light breakfast is included in the tariff.

Come and relax and enjoy warm, country hospitality with your hosts Leon and Mary Willis

Type: B&B
Rooms: 1 Queen, 1 King Single Twin, 1 Twin
Address: 23 Tait St, Crookwell
Phone: 02 4832 1075
Email: maryleonwillis@bigpond.com



RED HOUSE

Red House accommodation offers self-catered accommodation with an ensuite queen room and a large living room situated in the heart of Crookwell, an easy stroll to cafes, pubs and clubs. Enjoy the peaceful oasis of the garden as you eat breakfast on your private deck, curl up on the comfy couch with a book or DVD from our extensive collection or just enjoy the birds and the sunshine playing in the mature trees.

The property offers kitchen facilities in your room, all linens, free NBN wifi, Smart TV and a late check out. We love to look after ourselves and the environment. We use low allergy, natural and ethical products throughout the property. For your comfort, the property is smoke and pet free.

Type: B&B
Rooms: 1 Queen
Address: 15 Roberts St, Crookwell
Phone: 0428 238 023
Email: redhouseaccommodation@yahoo.com

www.facebook.com/redhouseaccommodation



SPUD MURPHY'S INN

Spud Murphy's Inn, is located in the main street opposite the courthouse near the Lindner Sock Factory. With a picturesque garden and spacious car park, Spud Murphy's Inn offers genuine country hospitality with a choice of 18 rooms including 3 king, 4 queen with ensuites, 3 additional bathrooms, a shared kitchen and large balcony suitable for groups and families. All rooms are heated plus cooling fans. Recreational groups and tradesmen are especially welcomed.

Type: B&B
Rooms: 18
Address: 12 Goulburn St Crookwell NSW 2583
Phone: 02 4832 1004

www.visitupperlachlan.com.au



WOMBEGAN CAVES

There is too much to see and do at Wombeyan Caves to just come for the day - why not stay overnight, the park offers a range of accommodation options that cater for individuals through to large groups. Choose from unpowered or powered camp sites, caravan sites, secluded cabins or dormitories for large groups.

Open: Park Open 24/7, Caves open 9am - 4pm every day except Christmas Day
Address: : Wombeyan Caves Rd, Wombeyan Caves (via Taralga)
Phone: 02 4843 5976
E: wombeyan.caves@environment.nsw.gov.au

www.nationalparks.nsw.gov.au



CROOKWELL FARMHOUSE

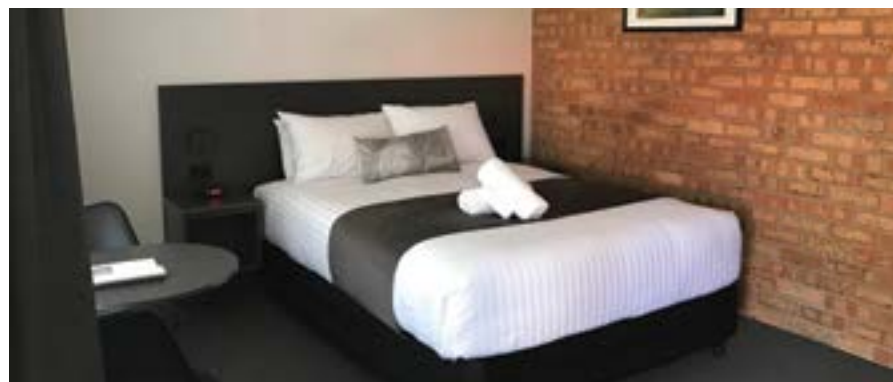
Crookwell Farmhouse offers all you need for a relaxing country holiday...your own private 1920's weatherboard farmhouse less than 10 minutes from town and under 2.5 hrs from Sydney. The house is situated on a small acreage property offering bucolic rural views whilst relaxing on the verandah overlooking the superb gardens.

The house comfortably sleeps 4, and up to 6 people with a fully equipped kitchen, air-conditioning, fireplace, laundry and the furnishings needed for a cosy stay!

The property is family friendly with plenty of room to run around, park the cars and even the boat.

View and book online now for a wonderful trip away.

TYPE: Self contained cottage
ROOMS: 2 bedrooms
ADDRESS: 481 Gorham Rd, Crookwell
PHONE: 0422 113 142
EMAIL: mylinhriley@hotmail.com



UPLAND PASTURES MOTEL

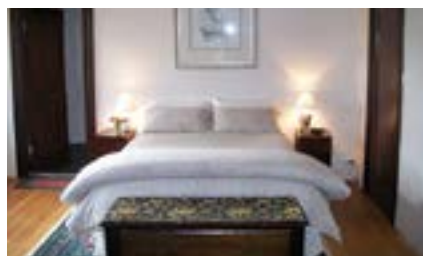
At Upland Pastures we pride ourselves on friendliness, cleanliness and good old fashioned country hospitality.

We offer a range of accommodation from Standard Rooms to Deluxe Suites and don't forget to try our hearty country breakfasts. Located within walking distance to the CBD we are perfectly located on acreage with plenty of off street parking.

So whether it's a short break away, staying a while to explore the region, enjoy the comfort, convenience and peace and quiet that Upland Pastures Motel has to offer.

Type: Motel
Rooms: 12 rooms standard and deluxe
Address: 2 Oram Street Crookwell
Phone: 02 4832 1999
Email: info@uplandpasturesmotel.com.au

www.uplandpasturesmotel.com.au



PINN COTTAGE AND HOMESTEAD

Pinn Cottage and Homestead offers a range of accommodation suitable for everything from romantic getaways through to family and group gatherings. Set within park like gardens, on the edge of Kiamma Creek, the property contains both a beautifully restored 19th century bluestone cottage and a colonial style homestead, all within the Crookwell Township and easy access to cafes restaurants sports facilities and rural attractions.

Type: Self-contained
Cottage Studio apartment: one queen room
Cottage Front apartment: 2 queen rooms
Homestead: 4 queen rooms with an extra 2 single beds
Address: 10 and 2 Prospect St, Crookwell
Phone: 0421 457 135
Email: info@pinncottage.com.au

www.pinncottage.com.au



THE CHURCH @ LAGGAN

This is a charming historic church that has been lovingly converted into luxury accommodation.

Set within the original stone church is a stunning contemporary interior which provides a fantastic luxurious country get-away for up to 8 guests accommodation includes; a comfortable lounge+dining space, 2 queen bedrooms, fully contained kitchen, bathroom with bath and shower, laundry with washer and dryer+ wood fire.

The Church @ Laggan is located on an elevated block on over an acre of garden on the edge of the historic village of Laggan, 8km outside Crookwell in the beautiful rolling hills of the Southern Tablelands.

Within walking distance of the village it is ideal for all ages.

TYPE: Self Contained
ROOMS: 2 Queen Bedrooms
ADDRESS: Laggan Rd, Laggan NSW
PHONE: 0414 394 461
EMAIL: lagganchurch@gmail.com

www.thechurchatlaggan.com



CHARLIE'S ON CHURCH

Charlies on Church is a gorgeous fully renovated 1940's cottage located within the picturesque Taralga Village. This lovingly renovated, self-contained, 3 bedroom home is your home away from home accommodating up to 8 people. With three large bedrooms, kitchen, bathroom, laundry and lounge, Charlies has everything you need for a comfortable and relaxing stay.

Type: Self Contained
Rooms: 1 queen, 1 double
1 queen with 2 singles
Address: 33 Church St, Taralga
Phone: 0429 131 331
Email: neilkaryn@bigpond.com

CARAVAN & CAMPING

Share your experience #visitupperlachlan  



BARBOUR PARK

Barbour Park offers 48 hours free parking for caravan and campervans right in the heart of Gunning. The park features free BBQs, toilets and hot showers in a picturesque setting next to Meadow Creek just a short stroll to the hotel, cafes and specialty shops. No booking required.



Type: Rest Area
Sites: Unpowered sites
Address: Yass St, Gunning
Phone: 02 4832 1988

www.visitupperlachlan.com.au



BIGGA RECREATION GROUND

Bigga Rec Ground offers 72 hours free camping right in the heart of Bigga village. The ground features a renovated amenities block including toilets and hot showers. Dump point available.

No booking required.



Type: Rest Area
Sites: Unpowered sites
Address: Mulgowrie St, Bigga
Phone: 02 4835 2234

www.visitupperlachlan.com.au

Water views or bush retreat when you are caravanning, motorhoming or camping, the choice is yours.

Spread across the region you have the option of caravan parks, showgrounds, state and national parks and rest stops where you can pull up, spend a night, spend a week, the choice is yours. From basic bush camping to fully equipped caravan park, the region has a location to suit all types of travellers and provide a base whilst you explore the surrounding countryside, towns and villages and while you are here why not take in a special event.



CROOKWELL CARAVAN PARK

Crookwell Caravan Park is situated in Crookwell township in the beautiful park like settings created by the meeting of the Crookwell River with Kiamma Creek. The park offers powered caravan and camping sites within easy walking distance of the Crookwell town centre with its many eateries, supermarket and specialty shops. Brand new camp kitchen and dump point now available.

Type: Caravan Park
Sites: 20 powered sites on slab, various grassed sites
Address: Laggan Rd, Crookwell
Phone: 02 4832 1988
Email: info@visitupperlachlan.com.au

www.visitupperlachlan.com.au

RV FRIENDLY TOWNS



When RV tourists enter a town displaying the RV Friendly Town™ sign, they know they will be welcome, that appropriate facilities will be provided and they will have access to a safe place to stay overnight.

The Upper Lachlan Shire is proud to promote Gunning and Bigga as RV Friendly towns under the Campervan and Motorhome Club of Australia program with Barbour Park and the Bigga Recreation Ground used for overnight stays and a base to further explore the sights and sounds of the Southern Tablelands.



Reflections Grabine Camping



Crookwell Caravan Park



Wombeayan Caves Camping



TARALGA SHOWGROUND

The Taralga Showground is a safe quiet place to camp, whether you're planning a short stay or a long stay. There are places for tents, caravans, camping trailers, horse floats and trucks with power sites available. The Showground is an ideal spot when there are major events or simply as a base to explore the surrounding region and enjoy the historic township of Taralga.

Type: Showground
Sites: Powered and unpowered sites
Address: Walsh St, Taralga
Phone: 02 4840 2558 or 02 4840 2831

www.taralgashowground.com

CANBERRA REGION TABLELANDS

When visiting The Upper Lachlan Shire, we encourage you to explore the surrounding towns and villages that make up the Tablelands region.

The Canberra Region Tablelands boasts a diverse range of experiences to be enjoyed by locals and visitors alike.

People - Our locals provide an authentic insight into the lives that drive the region. Chat to one of our local producers, business owners or residents and experience the region as they know it.

Place - With its close proximity to Canberra, the Tablelands is easily accessible and our towns and villages provide connections to the sense of place waiting to be explored.

Produce - The food, wine and natural handmade products in the region are world class. From farm fresh produce, to restaurants, cafes, vineyards and cellar doors, the Tablelands boasts a feast of impressive quality produce.



YASS VALLEY

Escape to Yass Valley and immerse yourself in real country experiences without venturing too far from the city. Be welcomed by locals when visiting award winning restaurants and cellar doors, retail stores and galleries, where you will have the opportunity to experience life as we live it. Stop and chat with a local, the true guides to our captivating region. With an impressive food and wine scene, Yass Valley

is the place to experience farm fresh produce and award winning local wines. Chat with passionate winemakers in Murrumbateman and Gundaroo about their latest vintage, or sit back and relax in one of our many restaurants and cafes. From a bushranger's grave in Binalong, a famous poet's hangout in Bowning, experience local arts at boutique galleries, an underground wonderland in Wee Jasper, to water-sports on Lake Burrinjuck, Yass Valley is a place to discover the real Australia. Visit yassvalley.com.au or call 1 300 886 014 for more information.

QUEANBEYAN

Nestled on the NSW / ACT border and only 10km from Canberra CBD, Queanbeyan is a culturally diverse regional city with large shopping outlets and known for its strong arts community including the Q Performing Arts Centre. Described as country living with city benefits, Queanbeyan is host to numerous affordable hotels and motels with easy access to all Canberra attractions, the NSW South Coast, The Snowy Mountains, local food and wine trails and the historic towns of Bungendore, Braidwood and Captains Flat. With a population of over 40,000 Queanbeyan has come a long way since its rural beginnings provided the labour force that built Canberra. The city is a great place to base yourself to visit the surrounding natural and cultural attractions. For all tourist information, call the Visitor Information Centre on 02 6285 6307 or visit www.visitqueanbeyan.com.au



HILLTOPS BOOROWA, HARDEN & YOUNG

Centred on the towns of Boorowa, Harden and Young, the Hilltops Region is full of relaxed, friendly country experiences for our visitors. As one of the most diverse food producing regions in Australia, cherries are our local hero along with a wide range of stone fruit. The beauty of the region is underpinned by rich agricultural soils producing fields of yellow canola in the spring and some of the best broad acre cropping in Australia. Value adding and cottage industries abound with visitors and locals being spoilt for choice in locally made jams, chutneys, pies and condiments on sale at local shops, cafés and farmers markets. The region is also rapidly emerging as one of the most exciting viticultural regions in Australia. The high altitude, coupled with the dry Summer and Autumn, provides excellent ripening conditions. This and the rich red soils enables the production of wines with great intensity of flavour and finesse. The region has a burgeoning number of key annual events including the Irish Woolfest in Boorowa, the Kite Festival in Harden, Lambing Flat Chinese Festival, National Cherry Festival in Young as well as the seasonal food and wine events showcasing the abundant local produce.

GOULBURN


Goulburn, once known mainly for its Big Merino, has fast become a thriving regional centre with natural beauty, impressive art and history, great food and fantastic wine. Whether it's a short break or a longer holiday you're looking for, you'll find plenty of things to see and do in Goulburn. Don't miss the Australian Blues Music Festival held on the second weekend of February or the Spring Event Series that includes SPYfest - where Goulburn becomes the epicentre of espionage. Our beautiful rose gardens are best seen in March for the Annual Rose Festival but from spring to autumn the city is saturated in colour. For more information, drop in to the Goulburn Visitor Information Centre on Sloane Street (opposite Belmore Park), free call: 1800 353 646 or go to www.goulburnaustralia.com.au



BRAIDWOOD & BUNGENDORE

Along the Kings Highway between Canberra and the Coast you will find undulating countryside and bushland which is home to the historic towns of Heritage Listed Braidwood (est 1839) and Bungendore (est 1837). While still in the area for cattle and sheep farming, the area is popular with the tree changers and commuters, artists, horse lovers and small local food producers. Our beautiful country towns are surrounded by other historic settlements all steeped in a rich history of Colonial settlement, Gold rushes and Bushrangers. Bungendore sits close to the expansive Lake George which is celebrated in the annual Weeweera Festival. Up from the escarpment over the lake are many small vineyards producing fine cool climate wines. Bungendore is a popular weekend destination for people who enjoy good coffee and the various galleries. Braidwood celebrates its heritage, arts and food every year, including festivals for the Airing of the Quilts in November, Braidwood Truffle Central in mid Winter, and the Bi-Annual Two Fires Festival of arts and Activism celebrating poet Judith Wright's legacy. Pop into the Braidwood Visitors Information Centre in the front of the National Theatre for any further information about the district or call 02 4842 1144 See www.bungendore.com.au

DIRECTORY

INFORMATION 			
Name	Location	Phone	
Crookwell VIC	Crookwell	02 4832 1988	
Taralga Gifts and Goodies	Taralga	02 4840 2558	
Gunning Paper Shop	Gunning	02 4845 1988	
ACCOMMODATION			
Name	Location	Phone	Page
Federal Hotel	Bigga	02 4835 2219	
Hillcrest House	Binda	0407 744 888	
Markdale	Binda	0418 868 830	30
Mill Cottage	Binda	02 4835 6087	
Bushranger Hotel	Collector	02 4848 0071	
Annie's Hideaway	Crookwell	0427 943 690	
Cloverleigh Homestay	Crookwell	02 4832 1075	31
Criterion Hotel	Crookwell	02 4832 1031	
Crookwell Farmhouse	Crookwell	0422 113 142	33
Crookwell Hotel/Motel	Crookwell	02 4832 1016	
Pinn Cottage	Crookwell	0421 457 135	32
Ravenscroft	Crookwell	0438 447 333	31
Spud Murphy's Inn	Crookwell	02 4832 1004	32
Red House Accomodation	Crookwell	0428 238 023	32
Tosha's Place	Crookwell	0409 321 934	31
Upland Pastures Motel	Crookwell	02 4832 1999	32
Abercrombie Ridge	Curraweela	0405 632 009	31
Grathawai Homestead	Curraweela	0450 100 899	
Tanjenong Cottages	Curraweela	02 4843 8150	
The Royal Hotel	Dalton	02 4845 6221	
Hadley Homestead	Fullerton	0427 272 181	
Eldorado Cottage	Golspie	0408 136 823	
Country Cottage Gunning	Gunning	0412 767 453	
Gunning Motel	Gunning	02 4845 1191	
Ilma Country Accommodation	Laggan	0418 404 066	
The Church @Laggan	Laggan	0414 394 461	33
Laggan Cottage	Laggan	02 4837 3039	
Clancy's Cottage	Narrawa	02 4836 5282	
Moorabinda Huts	Narrawa	02 4836 5203	
The Argyle Inn	Taralga	0448 402 008	
Charlies on Church	Taralga	0428 131 331	33
Lilac Cottage	Taralga	02 4840 2268	
Taralga Cottage	Taralga	0424 433 040	

The Taralga Hotel	Taralga	02 4840 2007	
The Sanctuary Farmhouse	Taralga	0419 014 540	
CARAVAN, CAMPING & CABINS			
Name	Location	Phone	Page
Abercrombie River Camp (F)	Abercrombie	N/A	
Abercrombie Caves	Abercrombie	02 6368 8603	
Bigga Recreation Ground (F)	Bigga	02 4835 2234	34
Crookwell Caravan Park	Crookwell	02 4832 1988	35
Crookwell Showground	Crookwell	0417 985 686	
Bummaroo Ford (F)	Curraweela	02 6336 1972	
Reflections Holiday Park Grabine Lakeside	Grabine	02 4835 2345	
Barbour Park (48hr free)	Gunning	02 4832 1988	34
Taralga Showground	Taralga	02 4840 2558	35
Tuena Campgrounds	Tuena	02 4832 1988	
Wombeyan Caves	Wombeyan	02 4843 5976	33

F = Free

ATTRACTIONS & ACTIVITIES			
Name	Location	Phone	Page
Markdale Edna Walling Garden	Binda	0418 868 830	30
Helen Stephans Gallery	Collector	0406 836 393	
Alpaca Farm Experience	Crookwell	0414 464 206	
Crookwell & District Art Gallery	Crookwell	02 4832 1988	
Crookwell Railway Museum	Crookwell	02 4832 1988	
Crown Theatre Café Play Centre	Crookwell	02 4832 2298	
Gullen Range Wind Farm	Crookwell	1800 509 711	
Lindners Sock Factory	Crookwell	02 4832 0202	
St Bartholomew's Organ Recital	Crookwell	02 4832 1988	
Sydney Vintage Car Restoration	Crookwell	02 4843 0888	
Tea House Gallery	Crookwell	0403 981 055	22 /24
Tanjenong Tin Shed Art Gallery	Curraweela	02 4843 8150	
Reflections Holiday Park Grabine Lakeside	Grabine	02 4835 2345	19
Picture House Art Gallery & Bookstore	Gunning	02 4845 1889	
Pye Cottage Museum	Gunning	02 4845 6339	
Crystal Brook Gardens and Lavender Farm	Laggan	02 4843 3333	27
Taralga Museum	Taralga	02 4843 8187	29
Taralga Wildlife Park	Taralga	0419 014 540	25
Abercrombie Caves	Trunkey Creek	02 6368 8603	
Wombeyan Caves	Wombeyan	02 4843 5976	19

FOOD & WINE			
Name	Location	Phone	Page
A Country Wedding	Binda	0419 234 890	

Food & Wine continued

Bigga Golf Club	Bigga	02 4835 2260	
Federal Hotel	Bigga	02 4835 2219	
Bushranger Hotel	Collector	02 4848 0071	
Collector Fresh	Collector	0413 932 997	
Collector Wines	Collector	0415 991 078	21
Kiki's in The Grove	Collector	02 4848 0098	21
Some Café	Collector	0481 130 066	
Café Zestt	Crookwell	02 4832 0060	
Crookwell Hotel/Motel	Crookwell	02 4832 1016	
Crookwell IGA	Crookwell	02 4832 1159	
Crown Theatre Café	Crookwell	02 4832 2298	
G Hills & Co	Crookwell	02 4832 1081	
Hong Kong Gardens	Crookwell	02 4832 1888	
Kiwi Café	Crookwell	0459 522 297	
Matt's Bakery	Crookwell	02 4832 2222	
Meats a Treat	Crookwell	02 4832 1418	
Paul's Café	Crookwell	02 4832 1745	
Royal Hotel	Dalton	02 4845 6221	
Kingsdale Winery	Goulburn	02 4822 4880	20
Albion Hotel	Grabben Gullen	02 4836 7208	
Merino Café	Gunning	02 4845 1250	
Old Hume Café	Gunning	02 4845 1034	
Telegraph Hotel	Gunning	02 4845 1217	
The Old Coach Stables	Gunning	0499 451 034	
Laggan Hotel	Laggan	02 4837 3208	
Laggan Pantry	Laggan	02 4837 3039	
Taralga General Store	Taralga	02 4840 2831	
Taralga Hotel	Taralga	02 4840 2007	21
Taralga Sports Club	Taralga	02 4840 2088	
The Argyle Inn	Taralga	0448 402 008	
The Ploughman Café	Taralga	02 4840 2968	
The Tangled Vine	Taralga	02 4840 2929	

SERVICE STATIONS

Name	Location	Phone	Page
Bigga General Store	Bigga	02 4835 2234	
Binda Store	Binda	02 4835 6024	
Crookwell Fuel Supplies	Crookwell	02 4832 0497	
Crookwell Hire	Crookwell	02 4832 1609	
Metro Petroleum	Crookwell	02 4832 2323	
Spackman Motors	Crookwell	02 4832 1041	
Bailey's Garage	Gunning	02 4845 1224	
Gunning Mobile	Gunning	02 4845 1224	
Gunning Motors	Gunning	02 4845 1394	

Service Stations continued

Metro Petoleum	Gunning	02 4845 1394	
Taralga Rural Supplies	Taralga	02 4840 2200	
Parsons General Store	Tuena	02 4834 5235	13

SPECIALTY RETAIL

Name	Location	Phone	Page
Binda Bargain Centre	Binda	02 4835 6072	
Arcadia Crookwell	Crookwell	0407 254 954	22
Bushrangers Clothing Co	Crookwell	02 4832 2268	
Crookwell Country Bunches	Crookwell	02 4832 2344	
Christian Bookshop	Crookwell	02 4832 1790	
Crookwell Footwear & Workwear	Crookwell	02 4832 1636	
Davies Newsagency	Crookwell	02 4832 1061	
Harts Pharmacy	Crookwell	02 4832 1138	
JD'S Hardware	Crookwell	02 4832 1155	
JD'S Rural Supplies	Crookwell	02 4832 1906	
Lindner Quality Socks	Crookwell	02 4832 0202	
Mad Hatters	Crookwell	0487 291 119	
McGeechan Farm Supplies	Crookwell	02 4832 1066	
Pats Plants	Crookwell	0413 281 172	
Soul Pattinson	Crookwell	02 4832 1177	
Jewellers @ Crookwell	Crookwell	02 4832 1292	
TJC Products	Crookwell	02 4832 1700	
Top Paddock	Crookwell	02 4832 2319	
Wacky Wombats Bargains	Crookwell	02 4832 2817	
Gunning Nearly Antiques & Collectables	Gunning	0418 419 721	
Gunning Paper Shop	Gunning	02 4845 1988	
Picture House Gallery & Bookshop	Gunning	02 4845 1889	
Eclectopia Gifts and Speciality Homewares	Taralga	0468 934 483	
Taralga Gifts & Goodies	Taralga	02 4840 2558	
Universal Books & Old Wares	Taralga	02 4840 2121	
Taralga General Store	Taralga	02 4840 2831	13

SWIMMING POOLS

Crookwell Swimming Pool	Crookwell	02 4832 1652	
Gunning Swimming Pool	Gunning	02 4845 4056	

GOLF COURSES

Bigga Golf Club	Bigga	02 4835 2260	
Crookwell Golf Club	Crookwell	02 4832 1285	
Gunning Golf Club	Gunning	02 4845 1195	
Taralga Golf Club	Taralga	02 4843 8187	

TENNIS COURTS

Crookwell Tennis Courts	Crookwell	02 4832 2098	
Bigga Tennis Courts	Bigga	02 4835 2260	
Gunning Tennis Courts	Gunning	02 4845 1939	
Taralga Tennis Courts	Taralga	02 4840 2445	

Lawn Bowls		
Crookwell Services Club	Crookwell	02 4832 1265
Taralga Sports Club	Taralga	02 4840 2088
SQUASH		
Crookwell Squash Courts	Crookwell	02 4832 1355
SHOWGROUNDS		
Crookwell	Crookwell	0417 985 686
Gunning	Gunning	02 4845 4105
Taralga	Taralga	0428 876 866
CHURCHES		
St James Anglican	Binda	0428 238 023
St Bartholomew's Anglican	Crookwell	02 4832 1057
St Mary's Catholic	Crookwell	02 4832 1633
Wesley Uniting	Crookwell	02 4832 1026
St Francis Xavier Catholic	Gunning	02 6226 1086
Christ the King Catholic	Taralga	02 4821 1022
St Luke's Anglican	Taralga	0429 531 152
St Stephen's Presbyterian	Taralga	02 4843 8163
VETS & BOARDING KENNELS		
Crookwell Veterinary Hospital	Crookwell	02 4832 1977
Pawtails Rural Retreat	Laggan	02 4837 3027

REAL ESTATE AGENTS		
Anderson MD & JJ	Crookwell	02 4832 1056
Duncombe & Co	Crookwell	02 4832 1732
Elders Rural Services	Crookwell	02 4832 3104
Ric Opie	Crookwell	0418 821 972
The Professionals	Crookwell	02 4832 2300



Crookwell Public School

Opportunity
Inclusive
Leadership
Student Centred
Positive
Engaging
Resilience
Collaborative



Visit our website!




Enjoyable
Dedicated
Supportive
Community Orientated
Innovative
Belonging
Future focused
Excellence



43 Denison Street, Crookwell, NSW, 2583
Ph: 48321 213
crookwell-p.school@det.nsw.edu.au





CROOKWELL VISITOR INFORMATION CENTRE



OPEN
7 DAYS

Crookwell • Collector • Gunning • Taralga

Your best source for reliable local information whether you are looking to visit, live or work in the region.

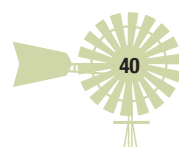
- Wide range of information including maps and guides from around NSW
- Personalised advice on what to see and do in the region
- Extensive selection of local wines, produce, art and crafts
- Specialise in group tour co-ordination
- Major event information and ticket sales
- Wide range of historical publications for family research
- Rotating Historical Society display with local artefacts on exhibition

www.visitupperlachlan.com.au

36 GOULBURN ST, CROOKWELL, NSW 2583
P (02) 4832 1988 E info@visitupperlachlan.com.au



www.visitupperlachlan.com.au 02 4832 1988



02 4832 1988 www.visitupperlachlan.com.au



In the HomeAway People's Choice
Holiday Rental Awards 2018
"Unique Category"

abercrombie ridge

country retreat | southern tablelands



In the HomeAway People's Choice
Holiday Rental Awards 2018
All Categories

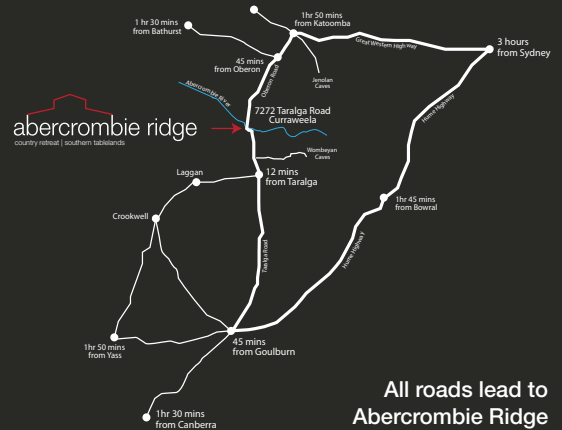
Luxury Escapes, Weddings & Events

Abercrombie Ridge is an exclusive country retreat that provides total privacy, seclusion and luxurious accommodation surrounded by 133 acres of natural bushland near Taralga NSW.

The property is fully self contained and has large living and entertainment areas, a separate games room and a hot tub. Also small and large event spaces are available with luxury amenities and catering space for events of all sizes.

Visit us for a weekend away or enjoy the property for an event of a lifetime.

Phone 0405 632 009 or visit
www.abercrombieridge.com.au



ENJOY LIFE IN THE SOUTHERN TABLELANDS

Ric Opie
REAL ESTATE

RESIDENTIAL

RURAL

COMMERCIAL

BUYER'S ADVICE

OFF-MARKET PROPERTY



RICOPIEREALSTATE.COM



RIC: 0418821972