

A woman wearing a red patterned shirt, blue pants, and a straw hat is walking away from the camera on a dirt path that winds through a forest. The trees are mostly bare, suggesting late autumn or winter, with some green undergrowth and small blue flowers visible along the path. The sky is visible through the branches.

Crookwell GUNNING TARALGA

BINDA BIGGA COLLECTOR DALTON GRABBen GULLEN LAGGAN TUENA

So close... but a world away

The SOUTHERN
TABLELANDS

Welcome

SUNSET AT ELDORADO COTTAGE

*So close...
but a world away*

Welcome to the Southern Tablelands located on the Great Dividing Range between Sydney and Melbourne and just north of Canberra, the nation's capital.

Take the time to explore the great diversity of the region, from the underground wonders of Wombeyan Caves to the outdoor adventures of Lake Wyangala, from stories of pioneering and bushranging to the creation of world class produce.

This is a region with stories to tell, beautiful vistas to behold and a warm country reception to be enjoyed – welcome to the Upper Lachlan “The Shire of Villages” – *so close but a world away*.

HOW TO GET HERE

BY CAR

The Upper Lachlan Shire is perfectly positioned just 2.5hrs from Sydney and less than an hour from Canberra.

BY PUBLIC TRANSPORT

For details on reaching the villages of the Upper Lachlan by train and bus, please contact the Crookwell Visitor Information Centre on **02 4832 1988**.



Disclaimer:
The information within this guide is current as of April 2021. For updated information and opening hours please visit www.visitupperlachlan.com.au. Publication produced by the Upper Lachlan Shire Council's Tourism Unit ©2021

Front cover image: Pinn Cottage and Homestead, Crookwell.

Visitor Information



CROOKWELL VISITOR INFORMATION CENTRE

36 Goulburn Street, Crookwell NSW 2583

PO Box 303, Crookwell NSW 2583

P. 02 4832 1988 | F. 02 4832 0119

info@visitupperlachlan.com.au

visitupperlachlan.com.au

OPENING HOURS

Mon – Fri 9am – 5pm | Sat & Sun 10am – 4pm



VISITOR INFORMATION OUTLET TARALGA GIFTS AND GOODIES

23 Orchard Street, Taralga NSW 2580

P. 02 4840 2558

OPENING HOURS

Fri – Mon 10am – 4pm



Summer

MIN 9.9°C / MAX 26.3°C

Autumn

MIN 3.2°C / MAX 22.5°C

Winter

MIN 0.6°C / MAX 11.9°C

Spring

MIN 3.1°C / MAX 21.6°C

CONTENTS

MAJOR ANNUAL EVENTS	4
TOWNS & VILLAGES	6
THE OPEN ROAD	8
PEDAL POWER	10
STRETCH YOUR LEGS	11
SUGGESTED ITINERARIES	12
GROUPS & FUNCTIONS	14
LIVE, WORK, INVEST	16
EXPLORE NATURE	18
SAVOUR	20
SHOPPING	22
REGIONAL MAP	26
TOWN MAPS	28
ARTS & CULTURE	30
OUTDOOR ACTION	31
PARKS, GARDENS & MORE	32
ANIMAL ENCOUNTERS	34
DISCOVER HISTORY	36
ACCOMMODATION	38
CARAVAN & CAMPING	44
SOUTHERN TABLELANDS REGION	46
BUSINESS DIRECTORY	48

TUNE IN

106.1 FM 2GN 93.5 EAGLE FM
1368 AM 2GN

EMERGENCY NUMBERS

UPPER LACHLAN SHIRE COUNCIL

02 4830 1000 (Business hours)
Crookwell 0429 786 659 (After hours)
Gunning 0427 454 206 (After hours)

**CROOKWELL
HOSPITAL**
02 4837 5000

**POLICE / FIRE /
AMBULANCE**
000

**NRMA ROADSIDE
ASSISTANCE**
13 11 22

SES
13 25 00

POISON INFORMATION CENTRE
13 11 26

SHARE YOUR UPPER LACHLAN EXPERIENCE

#visitupperlachlan

@upperlachlantourism

@upplachtourism



Major ANNUAL EVENTS

Mark your calendar 

January

Lavender, Herb & Chilli Festival
Australia Day Celebrations
Taralga Rodeo

February

Gunning PA&I Show
Crookwell AP&H Show
Laggan Pig Races

March

Taralga AP&H Show
Binda Picnic Races
Laggan Pub Car Show

April

Bigga's Biggest Market

May

Crookwell Potato Festival
Crookwell Bake & Brew

June

Taralga Art Show
Crookwell Amateur Dramatic Society Production
Gunning Patchwork Weekend

August

Grabine Freshwater Fishing Competition

October

Crookwell Rotary Swap Meet
Mary Gilmore Weekend

November

Taralga Vintage Farm Field Days
Crookwell Amateur Dramatic Society Production
Crookwell Garden Festival
Clawfield Cup
Art on the Range

December

Christmas Carols in the villages

Monthly Markets

Collector Markets
1st Sunday

Laggan Markets
3rd Saturday excl Dec and Jan

Gunning Lions Markets
Last Sunday excl Dec

Laggan and Gunning both hold special pre-Christmas markets

LAVENDER, HERB AND CHILLI FESTIVAL



TARALGA RODEO

Grab the family and meet your mates at the legendary Taralga Rodeo and Campdraft every Australia Day Long Weekend.

Competitors and spectators come from far and wide to enjoy the heart pumping rodeo action, campdraft, gymkhana, dog trials and more. Hot food, cold drinks, stalls, children's rides and amusements. Take the chance to sit on the hillside and enjoy country music with a top band.

When Australia Day Long Weekend
Where Taralga Showground
Phone 0424 316 752
Email taralgarodeo2@gmail.com
TARALGARODEO.COM.AU



CELEBRATING REGIONAL PRODUCE & HERITAGE



CROOKWELL TOWNSHIP AND SURROUNDS
JUST AN HOUR & A HALF NORTH OF CANBERRA

www.crookwellpotatofestival.com.au



CROOKWELL GARDEN FESTIVAL

1ST WEEKEND OF NOVEMBER



Every year, some of Crookwell district's best town and country gardens open their gates to the public on the first weekend of November. The Saturday Garden Lovers Market sells an exciting array of plants, tools, garden art, and much more.

It's a weekend to indulge in all things gardening.

www.crookwellgardenfestival.com



BINDA PICNIC RACES



LAGGAN PIG RACES



NESTLED HIGH ON THE GREAT DIVIDING RANGE, BOASTING SNOW DUSTED WINTERS WITH COSY WARM FIRES, AUTUMNS ABLAZE WITH COLOUR, SPRING BLOOMS GALORE AND MILD AND SUNNY SUMMERS, THE UPPER LACHLAN IS AN EXCEPTIONAL DESTINATION ALL YEAR ROUND, WHERE YOU CAN ESCAPE THE HECTIC WORLD AND RELAX AND RECHARGE. LESS THAN AN HOUR FROM CANBERRA AND 2.5 HOURS FROM SYDNEY, IT'S THE PERFECT DISTANCE FOR A DAY, A WEEKEND OR A WEEK. COME EXPERIENCE REAL COUNTRY LIVING FOR YOURSELF!

CROOKWELL & SURROUNDS

CROOKWELL

Renowned for its seed potato production, cool climate gardens and artisan sock factory, Crookwell is the largest town in the region and offers the visitor a wealth of things to see and do. Centrally located, Crookwell is an ideal base for exploring the wider region.

LAGGAN

Nowadays a peaceful hamlet, Laggan was once host to bushrangers and troopers as it was located on the main road between Goulburn and the Tuena goldfields. Now home to amazing markets, a great pub, intimate restaurant, brewery, vineyard and more, Laggan remains a vibrant community.

BINDA

Once the administrative centre of the district in the 1800s, Binda is now best known for horse racing and gardens. The "Funny Hill" race course has been holding race meetings since 1848 and is home to the annual Binda Picnic Races. Nearby Markdale Station

features a five acre, award winning Edna Walling garden which is not to be missed.

TUENA

Bushranger stories or gold mining history - take your pick as Tuena is rich in both, being the site of a major gold find in 1851. Located in a picturesque valley on the road between Goulburn and Bathurst, Tuena offers great camping, fishing, fossicking and more.

BIGGA

Famous for fine wool, trout fishing, stunning scenery and being the gateway to Lake Wyangala, Bigga sits proudly on the top of the range about 40 minutes north of Crookwell. The town is CMCA RV Friendly and welcomes its frequent visitors with open arms.

GRABBen GULLEN

Only fifteen minutes from Crookwell is its friendly neighbour, Grabben Gullen. This village gets its name from the Aboriginal word for "small waters", which describes this town perfectly. Sapphires, garnets, zircons and gold have been found in abundance over the years in the many feeder streams.

GUNNING & SURROUNDS

GUNNING

Two minutes off the Hume Highway between Sydney and Melbourne, Gunning has a reputation for excellent food and facilities. Up to 1820, Gunning was in fact the "Limit of Settlement", meaning settlers could not acquire property beyond this point. Aside from the fascinating local history, Gunning has a strong arts and crafts community.

DALTON

Home to a 40 million year old fossil leaf deposit, Dalton is also famous for sitting on a fault line and experiencing minor but persistent tremors. Once described in early records as "...the haunt of cattle duffers, bushrangers and robbery under arms..." today, this peaceful small town protects its heritage with pride and dedication.

COLLECTOR

Located just off the Federal Highway between Goulburn and Canberra, Collector was founded by Terence Aubrey Murray, the same man who built "Yarralumla" on the site of the Australian Prime Minister's residence. The aptly named Bushranger Hotel stands beside a memorial to Constable Nelson, who was shot dead by John Dunn, a member of Ben Hall's gang in 1865.

TARALGA & SURROUNDS

TARALGA

The first thing that strikes you when entering Taralga is the stone architecture much of which dates from the 1860s to 1890s, not quite Georgian, not quite Victorian, but very Taralgan. There is much doubt as to the origin of the name however one theory is that the village was originally called "Trial Gang" as it was one of the chief centres in Argyle where convicts and bushrangers were tried.

WOMBEGAN

In 1865, Wombeyan became the first area in Australia to be reserved for the protection of caves and there are still structures dating from the early 1900s. Today, the Wombeyan Karst Conservation Reserve boasts some of NSW's most impressive show caves, including Figtree Cave, widely regarded as one of the state's best self-guided cave experiences, and others that you can experience on a guided tour. The reserve also has beautiful bushwalks, including Waterfall Track, featuring scenic waterfall views, and Mares Forest Creek Track, with its popular swimming hole.



GIVE YOUR BEST MATE A BREAK

Here at Pawtails Rural Retreat we offer pawsome accommodation set on 110 acres of picturesque rural tranquility for your fur babies. Dogs and Cats big and small catering for their unique personalities and dispositions. Assurance is given that your furry family members will have the highest level of care, special attention, cleanliness and comfort.

- Dog boarding service
- Cat boarding service
- Doggie day care
- Daily Dog/Cat Exercise
- Grooming
- Door to door pick up and delivery service

CALL TODAY 02 4837 3027

PAWTAILSBOARDING.COM.AU | 2549 LAGGAN-TARALGA ROAD LAGGAN | INFO@PAWTAILSBOARDING.COM.AU



THE SOUTHERN TABLELANDS OFFERS SOME INCREDIBLE COUNTRYSIDE, RANGING FROM ROLLING HILLS WITH VIEWS FOREVER, TO STUNNING VISTAS OVER THE WESTERN BLUE MOUNTAINS, ALL OF WHICH PROMISE TO FASCINATE THE SENSES THROUGH THE DISTINCT SEASONAL CHANGES OF THE YEAR.

The Southern Tablelands offers some incredible countryside, ranging from rolling hills with views forever, to stunning vistas over the western Blue Mountains, all of which promise to fascinate the senses through the distinct seasonal changes of the year. A vibrant rural region for over two hundred years, remnants of this rich history remain interspersed throughout rich grazing lands. Sitting high on the Great Dividing Range, the region is also the source of the majestic Lachlan, Wollondilly and Abercrombie Rivers, and home of major storages of Lake Wyangala and Pejar Dam.

The Upper Lachlan is ideally located in the Southern Tablelands, with extraordinary road trips to experience, whether you are heading north to the Central West, south to the Canberra region or west to the Riverina. See page 26 for a detailed Regional Map.

THE OLD HUME HIGHWAY ROUTE 31

In 1824, Hume and Hovell famously set out from the Gunning district on their pioneering expedition to Port Phillip near the site of modern day Melbourne. Much of the modern Hume Highway follows their original route, however over the years, many of the small townships that were stopping points along the highway have been bypassed, to reduce travel times between Australia's state capitals. Happily, this has in turn created a network of quiet country towns, just off the beaten track, offering the traveller fantastic places to take a break, enjoy great food and facilities.

One such town is Gunning, situated on the "Old Hume Highway" between Goulburn and Yass. In this part of the region, a large section of the quiet, old highway can still be enjoyed. An added advantage is crossing the Cullerin Range, where you can enjoy fantastic views of the Main Southern Railway, still operating, hauling passenger and heavy loads between Sydney and Melbourne. Join the "Old Hume Highway" either at Gunning or at Breadalbane and make sure you stop at the Hume Monument at Fish River.

New South Wales Roads and Maritime Services has produced an excellent publication, "The Old Hume Highway - History begins with a road", which can be downloaded from their website, www.rms.nsw.gov.au.

THE TABLELANDS WAY

The Tablelands Way experience is a wonderful opportunity to discover rural NSW. It is one of the most scenic routes of the state and connects Canberra to the Hunter through Goulburn, Taralga, Oberon, Lithgow and Mudgee.

Scenic and Historic Drives

The Crookwell Visitor Information Centre has created a range of other scenic and historic drives to enjoy.

Route 1 - Wine to Caves

Kick off your trip with a visit to Kingsdale Winery and then head north through the town of Crookwell and the villages of Binda and Tuena which is an old gold mining site. Finish up by visiting the underground world of Abercrombie Caves.

Route 2 - The Tablelands Way

Welcome to McArthur country, with stunning views of the Blue Mountains. This scenic drive takes you from Goulburn, Australia's first inland city, all the way to Bummeroo Ford on the Abercrombie River, an ideal picnic spot.

Route 3 - Explorers & Bushrangers

Hamilton Hume famously began his trek south from his property near Gunning in 1824 however he also explored extensive parts of the Goulburn Plains. Likewise, bushrangers including Ben Hall terrorised travellers along these key transport routes. Explore from Gunning to Collector and get a sense of this history.

Route 4 - Sapphire & Gold Country

This region is interwoven with ancient waterways, many of which contain gold and precious gems. Whilst alluvial gold was prevalent, the area around Dalton is dotted with shaft mines chasing the elusive reefs.

Route 5 - River to River

Boasting stunning views of the Tablelands' rolling hills, this journey spans the Sydney Water Catchment from Crookwell to Wollondilly River country.

For full details of these drives go to www.visitupperlachlan.com.au, under explore. Contact the Crookwell Visitor Information Centre for more ideas on where to go and they'll point you in the right direction.

The diversity of adventures and attractions is truly remarkable, with everything from markets and festivals, camping spots to 5 star hotels, gentle bush walks to wild canyoning, tall tales to historic truths, food, wine and geological wonders.

For more information, visit www.tablelandsway.com.au.

CENTRAL WEST CONNECTION

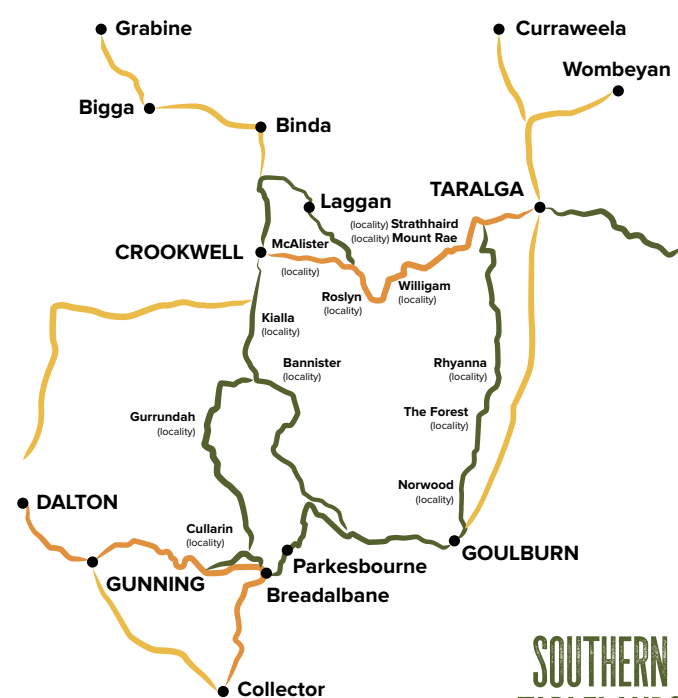
The upper Southern Tablelands were first explored in the attempt to connect the Goulburn Plains to the Bathurst Plains. Expeditions passed through modern day Taralga and the Crookwell district.

Today's traveller can explore the same paths in comfort with two fantastic main roads now connecting the region to the Central West areas of Orange, Bathurst and Oberon. Both the Tablelands Way and the Bathurst Road afford visitors breathtaking views as they pass through prime farming and native bushland, including crossing the majestic Abercrombie River.



pedal POWER

THE SOUTHERN TABLELANDS BOASTS QUIET ROADS, BEAUTIFUL SCENERY AND UNDULATING LANDSCAPES, MAKING IT PERFECT FOR CYCLING.



For directions and maps for cycling in our region, see visitupperlachlan.com.au or southerntablelandscycling.com

**SOUTHERN
TABLELANDS**
CYCLING TRAILS

Whether you are a passionate cycling enthusiast looking for a challenge or an adventurous family looking for a great weekend activity, the Southern Tablelands has many great options for both short and long rides. Need some inspiration? The Crookwell Visitor Information Centre has created a range of scenic and historic rides. Depending on your fitness level, experience and tastes – there’s something for everyone! Short historic town rides, multi-day rides with sleepovers in magical destinations, sealed and unsealed, rides that take in some of the local attractions, such as the Taralga Wildlife Park... There’s even a Gravel Coffee Circuit! For details of these rides go to www.visitupperlachlan.com.au under “Explore”.

Southern Tablelands Cycling has created a website, www.southerntablelandscycling.com with maps and directions for scenic trails all over the region, exploring the back routes that connect Goulburn with the smaller towns and villages of Crookwell, Taralga, Gunning and Collector.

Go Geo-caching

Ever tried geocaching?

While you are out and about why not try your hand at geo-caching, it's the modern version of hide and seek and fun for the whole family. There are geocaches all over the Southern Tablelands - how many can you find? For location clues check out the Geocaching Australia website, www.geocaching.com.au

KEVERSTONE NATIONAL PARK

stretch YOUR LEGS

CROOKWELL HERITAGE WALK

THERE IS NO BETTER WAY TO EXPLORE A REGION THAN ON FOOT, THE SLOWER PACE ALLOWS YOU TO TAKE IN THE SIGHTS, SOUNDS AND SMELLS.

The Upper Lachlan region offers some fantastic walking opportunities, from self-guided heritage walks, to picturesque strolls through nature conservation parks, teeming with native birdlife.

SELF-GUIDED WALKS

Discover at your own pace with one of the self-guided walks that are available for the townships of Crookwell, Taralga, Gunning, Laggan and Collector. Developed in conjunction with the local Historical Societies, these walks are packed with key points of interest throughout these pioneering towns, where life was tough but the people tougher. Each township has its own stories to tell, from bushrangers to explorers, squatters to railwaymen, come and learn about these people, their legacy and the place they called home.

Self-Guided walk brochures are available at the Crookwell and Taralga Visitor Information Centres and selected businesses around the Shire.

GUIDED WALKS

The volunteers of the Crookwell, Gunning and Taralga Historical Societies would be delighted to provide a guided tour of their village and point out the many interesting buildings, locations and artifacts whilst regaling you with the stories that bring history to life.

NATURE WALKS

The Upper Lachlan features a network of exceptional national parks, reserves and conservation areas for those that like to get off the beaten track. For more details, see the Explore Nature section of this guide on page 18.



GUNNING HERITAGE WALK
TAKES IN BARBOUR PARK

Suggested ITINERARIES

NO MATTER WHERE YOUR PASSIONS LIE, THERE'S SOMETHING FOR YOU IN THE UPPER LACHLAN.

Whether you have a half a day or a few days to explore this wonderful part of the Southern Tablelands, here are just a few ideas of how you can spend your time enjoying the sites, sounds and characters of the Shire of Villages.

Check out the full range of suggestions at www.visitupperlachlan.com.au, where you can download a descriptive itinerary of each suggested experience.

No matter where your passions lie – art, history, food, shopping, nature – there's something for you in the Upper Lachlan. Travelling in a large group? Why not make contact with the friendly staff at the Crookwell Visitor Information Centre, who are experienced at co-ordinating exciting packages.

Full Day



Discovering History

- 10:00am** The **Taralga Historical Society Museum** is simply one of the best regional experiences of its kind and there is no better place to start your history quest.
- 12:30pm** Arrive in Crookwell in time for lunch and then head to the Crookwell Visitor Information Centre to pick up a copy of the **Self-Guided Heritage Walk of Crookwell**. The walk takes you past all of the key landmarks in this beautiful Southern Tablelands town.
- 3:30pm** Gunning was once the "Limit of Settlement" and this historic transport hub has stories to tell, especially in the local cemetery.

Half Day



Retail Therapy

- 9:00am** The famous **Laggan Markets** run on the 3rd Saturday of each month and a warm welcome from the locals is a great way to start your retail therapy!
- 11:00am** After you have grabbed some home baked morning tea at the markets make your way to Crookwell and check in at **Lindner Quality Socks** to see how socks are made the "right" way!
- 11:45am** Don't stop yet, there is plenty more to see before lunch including the magnificent **Ensemble and Co**, with a stunning nursery and over eleven individual boutique stores to explore, or the **Crookwell Emporium**, specialising in locally produced artisan products.



EXPLORING THE TARALGA HISTORICAL MUSEUM



TOP PADDOCK

Full Day



Family Fun

- 9:00am** Depart your Crookwell accommodation and head on out to Taralga via Laggan, take your time to enjoy the countryside in the morning light.
- 9:45am** Depart Taralga having grabbed your picnic supplies and head on out to **Wombeyan Caves** for a guided cave tour at 10.30am.
- 1:00pm** After exploring the underworld you will definitely need to find a shady spot in the valley to enjoy your picnic before heading back to Taralga.
- 2:30pm** Arrive at **Taralga Wildlife Park** which showcases a large collection of native and exotic wildlife including a number of farm animals with miniature ponies, miniature cattle, pigs, sheep and a whole lot more.



TARALGA WILDLIFE PARK

Full Day



Savour the Southern

- 8:30am** Dine in the fresh air with a leisurely breakfast at **Kiki's in the Grove**.
- 10:00am** Sample award winning wines at **Collector Wines** cellar door.
- 12:30pm** Enjoy home baked treats with your lunch at **Merino Café Gunning**.
- 1:30pm** Walk off the morning's indulgences by taking the **Self-Guided Heritage Walk of Gunning** before heading off to Crookwell.
- 3:00pm** Time for a great coffee at **Café Zestt** in the heart of Crookwell.
- 8:00pm** Finish the day at **The Argyle Inn** in Taralga, awarded a "Hat" in the 2020 Good Food Guide awards for an exceptional regional produce offer.



LAGGAN PANTRY KITCHEN GARDEN



Groups & FUNCTIONS

ABERCROMBIE RIDGE



TOURING KADWELL FARM



THE STABLES BINDA

abercrombie ridge

luxury country retreat | weddings & events

Abercrombie Ridge is the perfect destination for couples wishing to experience a country wedding. We offer luxury amenities and a catering space for events of all sizes. With accommodation on site and locally, we can host weddings and events of any size. Visit us for a weekend away or enjoy the property for an event of a lifetime.



for more information enquire at www.abercrombieridge.com.au



LAGGAN MEMORIAL HALL

The Laggan Hall was built in 1926 and is located in the quaint little village of Laggan approximately 10 minutes from Crookwell.

The hall is a great space to rent for family events or large group gatherings, offering a kitchen and toilets on site surrounded by the rolling hills of the Upper Lachlan Shire.

Address 'Lone Pines' Peelwood Rd, Laggan
Phone 0419 599 405
Email lonepines@activ8.net.au

THE REGION OFFERS OPTIONS TO SUIT EVERY TASTE AND BUDGET.

Create great memories with friends and family, beautiful weddings, fun family reunions, educational tours or just relaxing together, the choice is yours.

Looking to organise a get together that your friends, family or colleagues will rave about? The towns and villages of the Southern Tablelands offer everything, from spectacular wedding venues to flexible meeting spaces, guided town tours to bare foot bowls, wine tastings to sumptuous catering, the region offers options to suit every taste and budget. For more information for planning a group visit or an event, visit www.visitupperlachlan.com.au under "Groups".

Tailored Itineraries



Are you a tour organiser? Contact the Crookwell Visitor Information Centre for a copy of the Group Touring directory that highlights all of the tour options that only pre-booked groups can access. The staff of the Crookwell Visitor Information Centre specialise in helping group organisers put together packages, arrange accommodation, transport, catering, everything you need for a memorable event. Phone (02) 4832 1988 for professional and friendly service.





LIVE, Work, INVEST

NESTLED HIGH ON THE GREAT DIVIDING RANGE, CONVENIENTLY CLOSE TO CANBERRA, SYDNEY, GOULBURN AND BATHURST, THE UPPER LACHLAN IS THE PERFECT PLACE TO LIVE, WORK AND INVEST.

Renowned for its breathtaking beauty, rich history and unique rural charm, the region offers a wide range of services that ensure enviable liveability, from excellent education and healthcare services, to outstanding recreational facilities and vibrant artistic groups. Our strong sense of community makes the Upper Lachlan Shire a great place to raise children, retire or “re-locate” an established business.

Enjoy the four seasons in all their glory as you settle into a safe, warm and welcoming country lifestyle. There is always something to do and see from award winning regional food and wine to a round of golf with friends or simply a regular morning coffee at a quaint café.

For more information on the wonderful opportunities to live, work and invest in the vibrant Upper Lachlan Shire go to www.upperlachlan.nsw.gov.au.



PEJDAR DAM



CVH
CROOKWELL
Veterinary Hospital

24 hour emergency
4832 1977

- Consultations by Appointment
- Small & Large Animals
- Farm Visits Available
- Monthly Mobile Clinics at Taralga, Bigga and Gunning

220 Goulburn Street
crookwellvet.com.au

TOGETHER AS ONE IN TRUTH AND KNOWLEDGE

- Newly refurbished, contemporary learning spaces
- Strong focus on the explicit instruction of literacy and numeracy
- Specialist Creative Arts, Performing Arts and Japanese Teachers
- Expansive play spaces including a large grass oval and a new multipurpose sports court
- Wellbeing and pastoral care with Peer Support and buddy programs
- Support and enrichment programs that nurture the needs of all
- A large variety of sporting opportunities
- Single stream school with small class sizes
- All children, regardless of faith tradition, are welcome

ST MARY'S PRIMARY SCHOOL
CROOKWELL

"St Mary's is a dynamic learning community. Our talented staff work with parents and aspire to nurture happy, resilient, compassionate young people. We support and encourage children to achieve their personal best." ---Principal Sarah Lowe

GREAT LEARNING. NURTURING COMMUNITY. ALL-INCLUSIVE.
Enquires to Principal Mrs. Sarah Lowe (02) 4832 1592
www.stmarysc.nsw.edu.au



DUNCOMBE & CO
LIVESTOCK & REAL ESTATE AGENTS
Established 1975 • Family Owned • All Principals Licensed

Office - 02 4832 1732
admin@duncombes.com.au
www.duncombes.com.au

LIVESTOCK
JOCK DUNCOMBE 0427 661 899

REAL ESTATE
ROBYN DUNCOMBE 0419 287 957

Crookwell Public School
Working Together - Growing Together



Committed to supporting the development of the whole child!

Enquiries
Mr Michael Whittington
Phone: 4832 1213
Email: crookwell-p.school@det.nsw.edu.au
www.crookwell-p.schools.nsw.edu.au

Explore NATURE

WOMBEGAN CAVES

GRABINE LAKESIDE

FROM UNDERGROUND WONDERS TO EAGLES ON THE WING, THE SOUTHERN TABLELANDS OFFERS A WEALTH OF OUTDOOR ADVENTURE.

WHERE TWO RIVERS MEET

Lake Wyangala, at 2.5 times the volume of Sydney Harbour, is a haven for pleasure boating, canoeing, swimming, water skiing, sailing, bushwalking, fishing and leisurely picnics. Located just 80km northwest of Crookwell, Lake Wyangala and Grabine Lakeside Holiday Park are situated where the Lachlan and Abercrombie Rivers meet and have been dammed to form the lake. The surrounding countryside boasts a vast array of flora and fauna, so after you have enjoyed the cool mountain waters make sure you explore the back country as well.

DISCOVER THE UNDERWORLD

Imagine a place so ancient that it was old before the first dinosaur walked the earth. Over millions of years the Wombeyan Caves maze of underground passages, streams and caverns were carved out. Known to the Aboriginal people for tens of thousands of years, the caves were re-discovered by Europeans in 1828 when explorers stumbled across a vast opening leading into the amazing depths below. The Wombeyan Caves feature vast caverns adorned with striking and delicate formations in a range of sizes, shapes and textures. These limestone caves are both remarkable and beautiful.

GET OFF THE BEATEN TRACK

You will find a wonderland of fauna and flora exploring the traditional lands of the Wiradjuri, Gundungurra and Ngannawal peoples, conserved through a network of national parks, reserves and conservation areas. Keverstone National Park and Gillindich Nature Reserve are easily accessible by travellers to the region north of Crookwell towards the villages of Bigga and Tuena.

Both Keverstone and Gillindich allow bushwalking, cycling, picnics and bush camping with the National Park also permitting horse riding. The areas are home to many vulnerable species including the Spotted-tailed Quoll, Gang Gang Cockatoo and the Powerful Owl.

Keverstone National Park is in two sections and can be accessed by either Mount Wells Trail or Wick Wack Road both off Bigga Road. Gillindich Nature Reserve is located on Junction Point Road approximately 30km north of Crookwell just after Bigga Road. For more information contact the National Parks and Wildlife Office in Queanbeyan on **(02) 6229 7166**.

BIRDS, BIRDS, BIRDS!

The Upper Lachlan Shire is blessed to be frequented by a huge variety of birdlife from majestic raptors, such as the rare Powerful Owl and mesmerizing Nankeen Kestrels, to magnificently adorned Gang Gang Cockatoos and Rainbow Bee-eaters. There are also many wonderful waterbirds, such as the Musk Duck and Azure Kingfisher.

A great place to view a large variety of birds is the Todkill Park Bird Hide in Crookwell. Todkill Park is located on Goulburn Road as you enter from the south east, the bird hide is on the edge of the dam and can be accessed via the hockey fields. Public access is available 24/7.

Have you heard of **Ebird.org**, offering a wealth of information on what birds you can find where across Australia? There have been almost 200 species of bird identified as being residents or visitors to the Upper Lachlan, including many rare birds, such as the Powerful Owl and Turquoise Parrot. Search **Ebird.org** to help plan your visit.

HARNESSING NATURE

Did you know that the first wind farm in the southern hemisphere to be connected into the national grid is located just six minutes south of Crookwell on the Goulburn Road? The winds that flow over the rolling hills of the Southern Tablelands have become an increasingly important source of renewable energy for Australia. There are a growing number of wind farms in the region, plus solar farms.

Visitors are able to visit some of these wind and solar farms to learn about Australia's renewable energy industries. These free guided tours provide an opportunity to get up close to turbines and commercial solar panels to find out more about harnessing nature to produce energy that used every day. Contact the Crookwell Visitor Information Centre for details.

NATURE NEVER FELT SO GOOD

f @reflectionsolidayparks
reflectionsolidayparks.com.au
P (02) 4835 2345
E grabinelakeside@reflectionsoliday.com.au

📍 Grabine Lakeside



WOMBEGAN CAVES

Hidden in a peaceful sheltered valley just one hour from Goulburn, the Wombeyan Karst Conservation Reserve offers guided and self-guided tours of spectacular limestone caves featuring vast caverns adorned with striking and delicate formations.

Enjoy the diverse range of flora and fauna. Follow one of the walking trails that lead you to spectacular canyons, lookouts and waterfalls. A range of accommodation styles is available including cottages, cabins, dormitories, caravan and camping sites along the beautiful valley floor so why not stay a while and discover all that Wombeyan has to offer.

Open Park Open 24/7, Caves open 9am – 4pm every day except Christmas Day
Address Wombeyan Caves Rd, Wombeyan Caves (via Taralga) **Phone** 02 4843 5976
Email wombeyan.caves@environment.nsw.gov.au
NATIONALPARKS.NSW.GOV.AU



THE ARGYLE INN

DOES DELICIOUS FOOD AND DRINK MAKE YOU HAPPY? THE SOUTHERN TABLELANDS HAVE BEEN A FOOD BOWL SINCE THE 1800S.

The Southern Tablelands have been a food bowl since the 1800s and so it is no surprise that the local produce is top quality – from world class lamb, to free range eggs, pristine raw honey to gourmet potatoes.

The Upper Lachlan is blessed with some award-winning food and wine establishments, like Taralga's Argyle Inn - recognised as one of NSW's top eateries in the Sydney Morning Herald's Good Food Guide, and Collector Wines - Gourmet Traveller's 2020 Star Cellar Door and Best Small Cellar Door in the Canberra Region. In the fine dining category, the stunning Laggan Pantry, complete with its own nano-brewery and tap room, is also firmly on the 'must do' list.

Our produce is also outstanding. The Gourmet Potato – Kadwell's Andean Sunrise potato won the 'Earth' category of the 2020 Harvey Norman 'delicious.' awards. In the 'Paddock' category, Moorlands Biodynamic Lamb took out the top gong, and both Peelwood's ALTO Olives and Taralga's Hannaford Oil consistently win trophies at national and international olive oil competitions.

You can purchase local wines in many of the region's restaurants, at a cellar door or at the Crookwell Visitor Information Centre. Depending on the season, take home some fresh produce, such as potatoes from Crookwell, where digging usually commences mid-April. Our butchers in Crookwell and Gunning are masters of their art and well worth a visit too.



THE TARALGA HOTEL

Built in 1876, the Taralga Hotel is a beautiful, heritage listed bluestone building on the winding road between Goulburn and Oberon.

Serving pub classics and on-trend seasonal menu items with a great beer list. Take a pit stop in the bright and breezy beer garden.



Address 24 Orchard St, Taralga
Phone 02 4840 2007
Email info@thetaralgahotel.com.au
TARALGAHOTEL.COM.AU



SOME CAFÉ AND COLLECTOR WINES



LAGGAN BREWERY



MERINO CAFÉ



COLLECTOR WINES

Taste Collector Wines in the beautiful c1829 Old Collector Inn.

Sip a wine by the fire in winter or enjoy our celebrated Tiger Tiger Chardonnay and Marked Tree Red Shiraz on a warm summer's day. The wines are hand-made for balance, character and depth of flavour. Seek us out at the cellar door, 40 minutes from Canberra and 2.5 hours from Sydney, just one minute off the Federal Highway in downtown Collector, next to 'Some Café'.

Winner - Star Cellar Door, Canberra District - 2020 Gourmet Traveller Wine; Top Wineries of Australia 2020, The Real Review.

Open Thurs - Mon, 10am - 4pm and most public holidays
Address 7 Murray St, Collector **Phone** 0438 953 998
Email wine@collectorwines.com.au
COLLECTORWINES.COM.AU



LAGGAN PANTRY

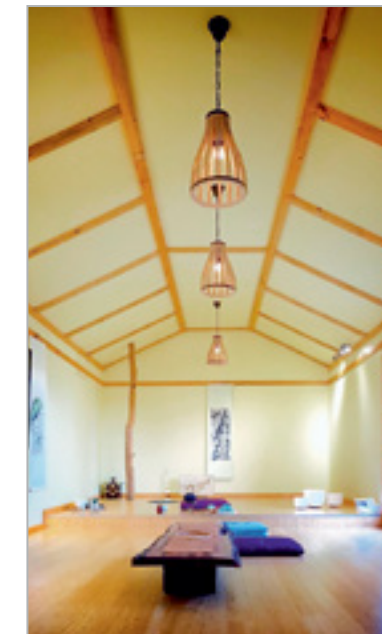
Laggan Pantry offers true country hospitality, amazing food and flavours all in a stunning rural setting. Our philosophy is that of seasonal, local and the freshest of produce.

From surrounding farms, our kitchen garden and local suppliers, we bring a modern Australian menu. We do not overcrowd our small restaurant, staggering bookings so we can focus entirely on each table at a time. We are fully licensed offering an extensive wine list showcasing local and regional wines, along with our own beers, brewed onsite at our nano-brewery.

Open Restaurant (bookings only) Dinner Fri - Sat, Lunch Sat - Sun. Brewery Sat - Sun, 12pm - 4pm. **Address** 1 Peelwood Rd, Laggan
Phone 02 4837 3039 **Email** thepantry@laggan.com.au
LAGGAN.COM.AU



COLLECTOR WINES



TEA HOUSE GALLERY



WE WELCOME YOU TO SAMPLE FINE TEAS
FROM AROUND THE WORLD IN A SERENE SETTING

ENJOY ARTS AND CRAFTS FROM INTERNATIONALLY
INTERNATIONALLY AWARD WINNING
AUSTRALIAN ARTISTS

PARTICIPATE IN TEA EDUCATION
AND HEALTH PROGRAMMES

OPENING TIMES:

- SPECIAL EVENTS
- BY APPOINTMENT

41 COWPER LANE, CROOKWELL, NSW 2583
T: 0403 981 055
STEPHEN@TEAGUILDINTERNATIONAL.COM
WWW.TEAGUILDINTERNATIONAL.COM

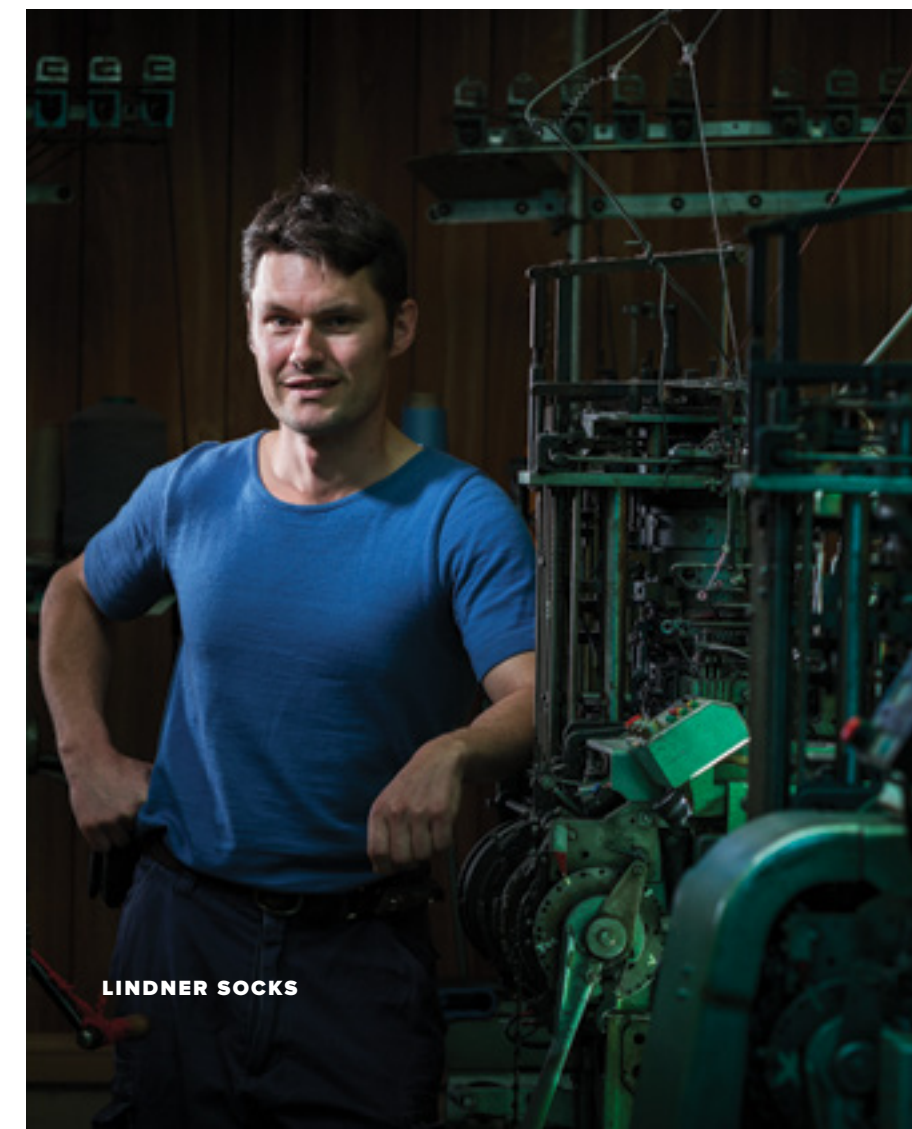
THE REGION IS A NETWORK OF SMALL TOWNS AND VILLAGES WITH UNIQUE SHOPPING EXPERIENCES YOU WON'T FIND IN THE BIG MALLS.

Tired of the hustle and bustle of city shopping? Come and experience shopping as it was meant to be! The region is a network of small towns and villages with unique shopping experiences you won't find in the big malls. Looking for a gift, a new outfit or some personal pampering? Be sure to check the specialty shops right across the Shire.

From antiques to locally made socks, the region boasts a range of retailers who offer personalised service. There are outlets in most of the towns across the area, so take some time to explore - you never know what you will find.



LAGGAN PANTRY



LINDNER SOCKS



TARALGA GENERAL STORE

Taralga General Store is your one stop convenience store located in the heart of historic Taralga.

We stock an array of fresh produce, grocery items and snacks, along with local oils, jams, honey and giftware. Browse through our display of Taralga Historical Society books, or just pick up a newspaper or some ice for the weekend. Come and enjoy our historic town and be sure to stop by for some good old fashioned service with a smile.

Address 34 Orchard St, Taralga
Phone 02 4840 2831
Email malbec@bigpond.com.au



Meet the Locals

AARON WILLIAMS // GUNNING BUTCHER SHOP

Having run a successful mobile butcher service in the Upper Lachlan for many years, Aaron and his wife Kate were already well-known in the region when they took on the Gunning Butcher Shop in May 2018. Since then, the already popular business has gone from strength to strength, most recently taking out top gongs in the 2019 Australian Meat Industry Council's Sausage King Competition in both the lamb and gourmet sausage categories followed by 2nd place in the traditional beef sausage category.

One of the joys of travelling through regional New South Wales is getting to meet the locals, like Aaron Williams from the Gunning Butcher Shop. Meet some of the locals and read their full stories on our website, get an understanding of their passion for what they do, why they love the region they call home and then come and meet them in person!
www.visitupperlachlan.com.au



HART'S PHARMACY

General Pharmacy Needs – Prescriptions

Old Fashioned Friendly Service

Wide range of gift packs, personal care, perfumes, cosmetics, photo frames and much more...something for all ages.

Serving the Crookwell District for over 70 years

Open Mon – Fri 8.30am – 6.00pm, Sat 9am – 12.30pm
Address 78 Goulburn St, Crookwell
Phone 02 4832 1138
Email harts.pharmacy@nexon.com.au
WWW.HARTSPHARMACY.COM.AU



ENSEMBLE & CO

Residing in the grand Arcadia building, Ensemble & Co features a coffee bar, nursery and over eleven individual boutique stores.

Enjoy delicious coffee & tea, gourmet cakes and seasonal refreshments. We boast furniture, homewares, fashion, art, jewellery and a paddock to plate pantry.

Coming soon is our wine bar!

Open 10am – 4pm Thursday – Monday, Closed Tuesday and Wednesday
Address 77 Goulburn St, Crookwell
Phone 0409 245 220
Email ensembleandco@gmail.com
Instagram ensembleandco

CROOKWELL EMPORIUM

Local - Creative - Authentic



100 Goulburn St Crookwell
hello@crookwellemporium.com.au
 0117 282 801 or 0411 464 206



ECLECTOPIA GIFTS & HOMEWARES

Eclectopia is about the 'Gift of Giving'.

We curate an eclectic mix of Australian artisan made jewellery, ceramics, candles, art, greeting cards, body care, accessories, quality books, stationery and homewares.

Complimentary gift wrapping and gift vouchers available.

Come and visit the historic village of Taralga, within the beautiful Southern Tablelands.

Type Gift store and Specialty Homewares **Open** Thursday to Sunday 10am to 4pm
Address Shops 2 & 3, 79 Orchard St, Taralga **Phone** 0468 934 483
Email eclectopiagifts@gmail.com
ECLECTOPIAGIFTS.COM



PARSONS GENERAL STORE

The General Store in Tuena has been run by the Parsons' family since 1886.

The store is magnificent nod to the past but has everything the modern traveller needs - camping and fossicking supplies, fuel, ice, groceries, pies & sausage rolls, coffee, liquor and more. Why not stay in Tuena - the nearby Tuena Campgrounds offer powered and unpowered sites with hot showers. And try your hand at fossicking, you never know your luck!

Open Sat, Mon, Wed, Fri 10am – 7pm / Sun, Tues, Thurs 2pm – 7pm
Address Bathurst St, Tuena
Phone 02 4834 5235
Email jenelletuena@gmail.com



In store:
 Ensemble & Co,
 77 Goulburn Street, Crookwell

Online:
www.paradisoceramics.com.au
info@paradisoceramics.com
 0414 860 034
 facebook instagram paradisoceramics



"We welcome you to visit our shop and factory to see how we make our socks using vintage machines."
 -Andrew Lindner



Family Sock Makers Since 1730

6 Goulburn Street, Crookwell

(02) 4832 0202 | info@lindnersocks.com.au

www.lindnersocks.com.au

Open Mon-Fri 9am-4.30pm and Sat 9.30am-12.30pm*

*Please check our website for changes to opening hours

Travel Distances

To Crookwell, Gunning & Taralga

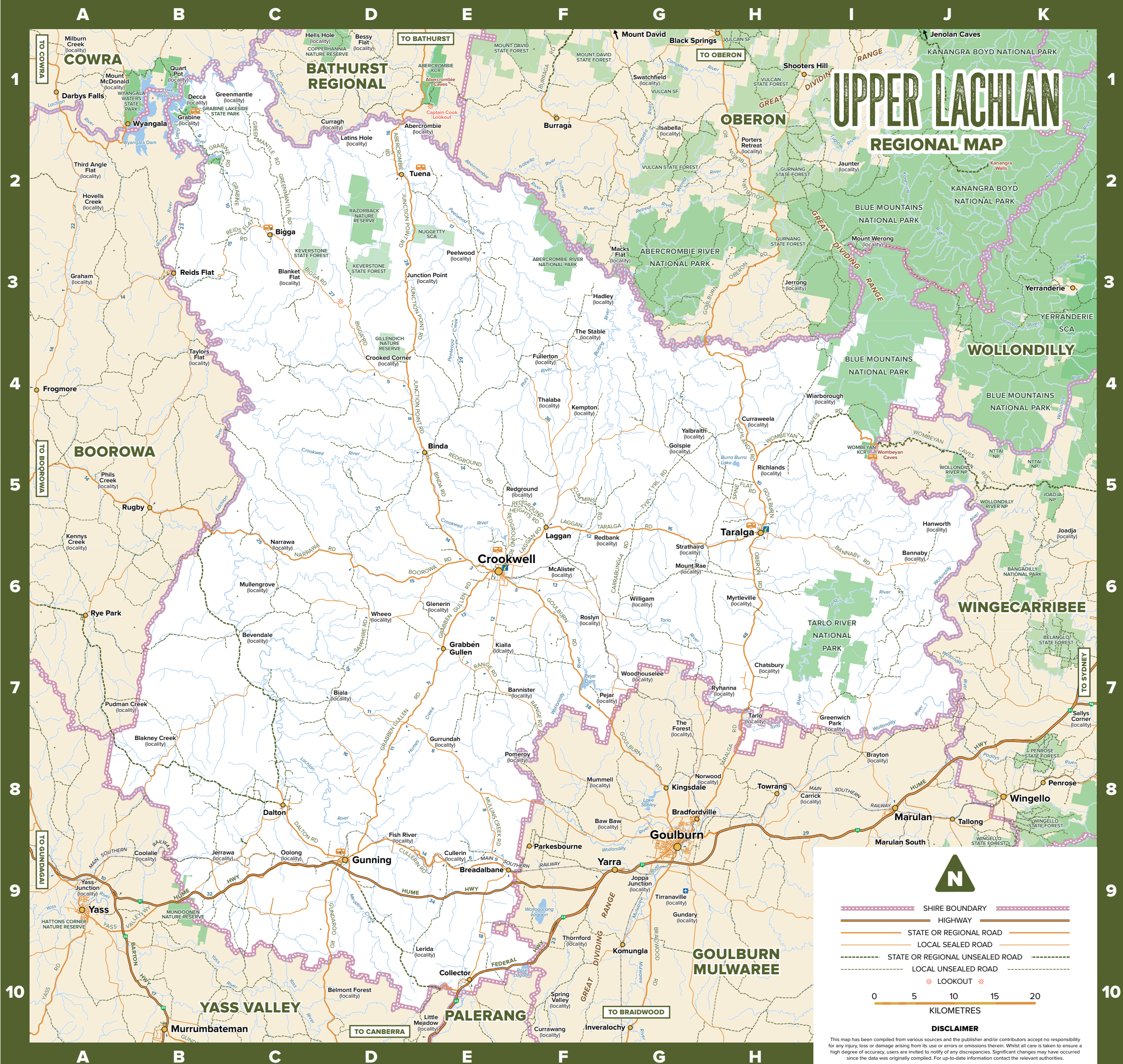
DISTANCES FROM CROOKWELL

Long Term Weather Averages

(Taralga Post Office)

MONTH	MEAN MAX TEMP	MEAN MIN TEMP	MEAN RAINFALL	MEAN RAIN DAYS
Jan	26.3°C	12.1°C	72.3mm	6.8
Feb	25°C	12.1°C	72.4mm	6.9
Mar	22.5°C	9.9°C	67.1mm	6.7
Apr	18.8°C	6.2°C	58.2mm	6.3
May	14.5°C	3.2°C	58.5mm	6.9
Jun	11.2°C	1.7°C	75.7mm	8.9
Jul	10.4°C	0.6°C	66.2mm	8.7
Aug	11.9°C	1.2°C	67.7mm	8.2
Sept	15.1°C	3.1°C	61.3mm	7.8
Oct	18.6°C	5.4°C	69.4mm	7.7
Nov	21.6°C	7.7°C	67.7mm	6.8
Dec	24.6°C	9.9°C	66.2mm	6.6
Annual	18.4°C	6.1°C	804mm	88

Source: Bureau of Meteorology Jan 2021



TOWN MAP OF TARALGA

TOWN MAP OF GUNNING



TOWN MAP OF CROOKWELL

- MAJOR ROAD
- ROAD
- UNSEALED ROAD
- RAILWAY (ABANDONED)



0 250 500
METRES



Arts & CULTURE

PABLO PICASSO SAID, “THE PURPOSE OF ART IS WASHING THE DUST OF DAILY LIFE OFF OUR SOULS”

Pablo Picasso said, “The purpose of art is washing the dust of daily life off our souls”, so come and cleanse yourself with some wonderful literature, music and visual art.

The district is home to many talented artists including writers, painters, photographers, sculptors, musicians, actors, poets and more who all contribute to the social fabric of life in the Upper Lachlan. You can enjoy and engage in their passions by visiting an exhibition, attending a performance or joining in a social night of poetry and music.

For details on regular and upcoming events, simply follow us social media.

@upperlachlantourism @upplachtourism



TARALGA ART SHOW

The annual Taralga Art Show is a vibrant exhibition which showcases works by local and regional artists.

Visitors will see works including paintings, woodwork, sculpture, photography, ceramics and much more. Creative workshops for both adults and children are held on the Saturday. Opening night is an annual social event for the town and everyone is welcome on the Saturday night from 6pm.

When June Long Weekend 10am - 4pm on Saturday and Sunday, 10am - 3pm on Monday
Address Taralga Memorial Hall, Orchard St, Taralga **Phone** 02 4840 6101
Facebook Taralga Art Show
Email taralgaartshow@gmail.com

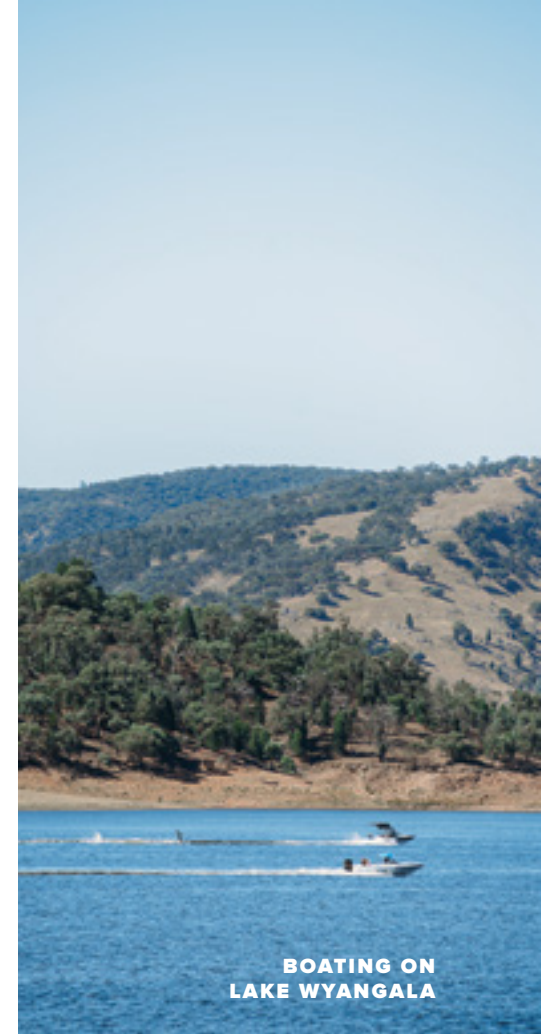
41 COWPER LANE, CROOKWELL, NSW 2583
T: 0403 981 055
WWW.TEAGUILDINTERNATIONAL.COM

TEA • ART CERAMICS

TEA HOUSE GALLERY

Outdoor ACTION

SEEKING SOME SPORTING ACTION ON YOUR HOLIDAY? WHETHER YOU ARE A KEEN ANGLER, A SOCIAL TENNIS PLAYER OR AN ASPIRING PROFESSIONAL GOLFER, EACH LOCAL TOWN AND VILLAGE HAS SOMETHING TO OFFER.



BOATING ON LAKE WYANGALA

FISHING & BOATING

The Upper Lachlan Shire is the home to the headwaters of the Lachlan and Wollondilly Rivers and is bordered by the Abercrombie River to the north. This means there are literally hundreds of waterways spread across the region and many of them offer great fishing spots - from Lake Wyangala in the north to Pejar Dam the south, the Lachlan River to the west and the Wollondilly in the east.

POPULAR FISHING SPOTS

CROOKWELL WATER SUPPLY – Trout, Golden Perch, Silver Bream

PEJAR DAM – Trout

LAKE WYANGALA – Trout, Catfish, Silver Perch, Golden Perch, Murray Cod

ABERCROMBIE RIVER – Trout, Silver Perch, Macquarie Perch

GOLF

There are four wonderful country golf courses in the region each with their own character. Located in Bigga, Crookwell, Gunning and Taralga, each of the courses are maintained by a dedicated band of volunteers and they are more than happy to welcome guests to enjoy the fruits of their labours.

For a full list of sporting facilities including lawn bowls, tennis and squash courts please see the directory on page 48.

TAKE A SPLASH

There are well maintained public pools in both Crookwell and Gunning which are usually open from November to March each year when the weather is just perfect for a dip.



CROOKWELL GOLF CLUB

Crookwell Golf Course is a picturesque 9 hole, 18 tee course with abundant trees, well groomed fairways, waterways and elevated greens.

Visitors are welcome - honesty box as you enter the course or join our Saturday competition. The clubhouse offers a full bar service and can cater to a wide range of functions from parties to weddings.

Open Thurs-Fri 5pm til 10pm / Sat 10am til 10pm
Address Grange Rd, Crookwell
Phone 02 4832 1285
FACEBOOK.COM/CROOKWELLGOLFCLUB

Parks GARDENS & More

RELAX AND UNWIND WITH A PICNIC FOR TWO, TAKE THE KIDS FOR A SWIM OR JUST ENJOY A GOOD BOOK. THE TOWNSHIPS AND COUNTRYSIDE OF THE SOUTHERN TABLELANDS OFFER A VAST ARRAY OF OPTIONS TO JUST UNWIND.

SUPERB GARDENS

A cool climate, rich soils and reliable rainfall make the Southern Tablelands a gardener's paradise. The district also features a vibrant arts community, many of whom are passionate gardeners. This happy combination has led to the creation of some truly inspirational local gardens with spectacular spring blooms and gorgeous autumn colour. Not to be outdone however, the region also supports temperate climate plantings with large amounts of lavender grown in the area.

Any time is a great time to visit, but for a gardener Spring has to be one of the best. With lengthening days the gardens burst into life with lush new foliage and abundant blossoms. Crookwell Garden Festival celebrates this joyfully exuberant season by opening a carefully selected range of the finest local gardens.

During Autumn, Spring and Summer there are often different gardens around the region that visitors can enjoy. Contact the Crookwell Visitor Information Centre for details.

Ideal Picnic Spots



With magnificent waterways and picturesque countryside there are many great picnic spots around the region. Here are a few of the top picks:

Pejar Dam

Goulburn Road - half way between Goulburn and Crookwell on the Wollondilly River, the rest area provides BBQs, picnic shelters and toilets.

Barbour Park

Yass Street, Gunning - nestled alongside Meadow Creek, Barbour Park offers toilets, picnic tables, BBQs and play equipment.

Goodhew Park

Orchard Street, Taralga - conveniently located on the main street of Taralga, Goodhew Park features toilets, picnic tables, BBQ, rotunda, playground, skate park and outdoor gym.

Memorial Park

Spring Street, Crookwell - featuring a stunning rose garden and memorials to the servicemen of the district, Memorial Park also has toilets, a gazebo and seating.

Coleman Park

Goulburn Street, Crookwell - located on the main street adjacent to the public swimming pool, the park offers BBQs, covered picnic tables, playground and toilets.

Pat Cullen Park

Roberts Street, Crookwell - situated beside Kiamma Creek, Pat Cullen Park features wood carvings by Welshman Adam Humphries, a beautiful walk along the banks of the creek, and offers BBQs, seating and toilets.

KIKI'S IN THE GROVE

BOWOOD GARDEN



CRYSTAL BROOK GARDENS AND LAVENDER FARM

A small farm with a lot of surprises.

In summer bees and butterflies frolic amidst the heady scent of lavender, roses and salvias. Autumn brings a kaleidoscope of colour: in winter there is quiet in the air with frosty days and warm fires...and spring emerges with bulbs galore and bursting buds. Function Centre – Speciality Shop – Seasonal festivals – Parties, anniversaries, business meetings. Paris Cafe - morning and afternoon tea – lunch and dinner. Plants in season.

Open Oct - May - Sat and Sun 11am - 5pm / all year by appointment

Address 257 Tyrl Tyrl rd, Laggan **Phone** 02 4843 3333

Email judith@lavenderatlaggan.com.au

LAVENDERATLAGGAN.COM.AU

MARKDALE GARDEN

Animal ENCOUNTERS



Meet the Locals

KERRY AND FERNANDO CALIGORE // CALENNY ORCHARD

Growing up, both Kerry and Fernando had spent time in the country, developing an appreciation for where their food came from and how it was grown. They wanted somewhere of their own to give their kids the same experience, and to grow their own produce without the use of chemicals. Kerry and Fernando are now proud to call their block at Crooked Corner their full-time home. And it's a far cry from what they started with! When they first arrived, roos had been living in the tumbled down house. Now it's a paradise. The orchards of apple, pear, cherry and fig are well-established. Kerry's bees are thriving in the clean air, feasting on the wattle and yellow box, without fear of exposure to pesticides and other sprays.

One of the joys of travelling through regional New South Wales is getting to meet the locals, like Kerry & Fernando Caligore from Calenny Orchard. Meet some of the locals and read their full stories on our website, get an understanding of their passion for what they do, why they love the region they call home and then come and meet them in person!

www.visitupperlachlan.com.au

THERE IS NOTHING QUITE LIKE GETTING UP CLOSE AND PERSONAL WITH THE ANIMAL KINGDOM AND THERE ARE PLENTY OF OPPORTUNITIES ACROSS THE UPPER LACHLAN.

Whether wandering with the kangaroos through native landscapes such as Wombeyan Karst, Keverstone or Lake Wyangala, stretching your legs on a town walk or visiting a purpose built animal encounter, the chances to engage with native and exotic wildlife are endless.

Learn to speak 'Alpaca' at Greenridge Glen in Crookwell, practise gratitude and mindfulness with the Rubyvale Horses Teaching Humans Herd at Laggan, or nurse a wombat and enjoy the incredible bird collection at the Taralga Wildlife Park. You can even have a beekeeping experience and indulge in a honey tasting at Crooked Corner's Calenny Orchard.



HAND-FEEDING KANGAROOS AT TARALGA WILDLIFE PARK



ALPACA FARM EXPERIENCE

BEEKEEPING Experience

CALENNY ORCHARD CROOKWELL NSW

2 hours from Canberra and 3 hours from Sydney

Enjoy the great outdoors & learn about our essential pollinators

Our honey bee experience is seasonal October-March

ADULTS \$70 | CHILDREN \$50

CONTACT US

@calennyorchard.com.au
calennyorchard@gmail.com
0248353017

DO YOU LOVE HONEY BEES? We do! Why not come to our outdoor classroom and have your very own honey bee experience. Learn about honey bees, how they forage, collect pollen, make honey and their amazing colony structure. You will be protected in a beekeepers suit, gloves and accompanied with our experienced beekeeper. Our experience is hands on in our outdoor classroom.

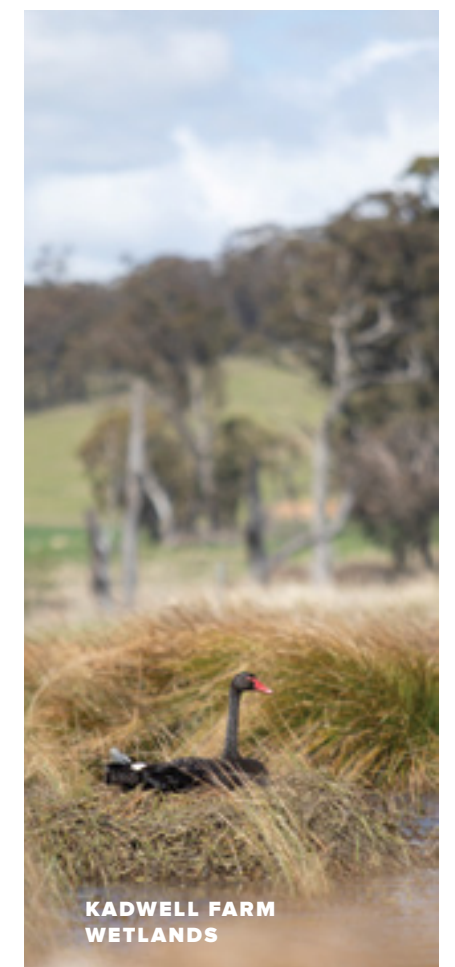
At the conclusion of our honey bee hive experience, you will get to indulge in our honey tasting experience, learn about how honey is graded and in doing so will become a connoisseur and knowledgeable of RAW HONEY.

TARALGA WILDLIFE PARK

257 Bannaby Road
Taralga NSW
90 minutes from the heart of Canberra
0419 014 540

Trip Advisor rating ★★★★★
Facebook rating ★★★★★

Open Thursday to Monday and every day during School Holidays from 10am to 4pm



KADWELL FARM WETLANDS



TARALGA HISTORICAL MUSEUM

WALK IN THE FOOTSTEPS OF BOTH THE INDIGENOUS PEOPLES OF THIS LAND AND EARLY PIONEERS AS YOU EXPLORE THE MANY NATURAL AND MANMADE WONDERS THAT MAKE UP THE UPPER LACHLAN'S RICH HISTORY.

The indigenous Wiradujuri, Gundungurra and Ngunnawal peoples appear to have used these lands as travelling routes however with its proximity to the early colony and its strategic location the area was experiencing permanent European settlement within 30 years of the First Fleet.

Arable farm land and reliable rainfall are at the heart of the whole region and were the main drawcard to the early settlers of the region. When you add gold and silver, major transport routes and country ingenuity, famous authors and famous bushrangers you have a wonderful tapestry of stories with hidden gems everywhere – literally!

The excellent Taralga Historical Society Museum and Gunning's Pye Cottage Museum contain some terrific buildings and displays that tell the stories of the region's early pioneering days. Another historic gem worth a visit is the Crookwell Railway Station. First opened in 1902, Crookwell was a significant

pioneer terminus station. The line was used to transport stock, goods which included potatoes, iron ore and superphosphates as well as people.

There are also four NSW Heritage-listed sites in the Upper Lachlan – Collector's Bushranger Hotel, named after the notorious outlaws who plagued the early settlement, Taralga's Christ the King Catholic Church, with its stunning terracotta cartwheel style 'Rose Window' and magnificent marble alter quarried at Wombeyan Caves, plus the fascinating historical railway stations at Crookwell and Gunning.

HISTORIC WALKS

A lovely way to while away some time when visiting rural Australian towns and villages is wandering the wide, tree lined streets, day dreaming about the beautiful old buildings nestled within. Stretch your legs as you slow down and ponder life, "back in the good ol' days".

SELF-GUIDED WALKS

There are self-guided walk brochures available for Collector, Crookwell, Gunning and Taralga available from the Crookwell and Taralga Visitor Information Centres and selected businesses around the Shire.

GUIDED WALKS

The volunteers of the Crookwell, Gunning and Taralga Historical Societies would be delighted to provide a guided tour of their village and point out the many interesting buildings, locations and artifacts whilst regaling you with the stories that bring history to life.



FOSSICKING FOR GOLD AT TUENA

THE LURE OF PRECIOUS METALS

Many of the early visitors to the region were drawn by the lure of precious metals. From Dalton in the south to Tuena in the north, gold was the precious metal of choice.

You can still pan for gold at Tuena public fossicking area. While in Tuena, check out the Book Keeper's Cottage and get a bird's eye view of the goldfields from the suspension bridge.

The history of metal mining goes beyond gold and includes the beautiful little village of Peelwood, home to a copper, silver and lead mine from the 1870's. Peelwood sits in the beautiful Peelwood Valley and a visit to modern day Peelwood still reveals the chimney stack.

Just north of Gunning, the Dalton area was also mined for gold with multiple small but high quality deposits. Make sure you take a selfie with the iron horses of Dalton and then follow the Lachlan River north as it meanders through the country side, watch out for the troopers along that way!

STRIKE IT RICH!

Whether it is gold or gemstones that take your fancy, you have a chance of finding either or both in the waterways across the region. The Upper Lachlan Shire is a state declared fossicking district which means that people do not require the permission of Exploration Licence holders to fossick in the district.

TARALGA HISTORICAL MUSEUM

Come and experience a trip back in time at Taralga's Historical Museum.

See memories from both World Wars.

Experience what school life was like many years ago.

Witness how life was lived in the early 1900s through many displays including clothing, furniture, photographs, farm machinery etc.

Our Museum is open on Saturdays from 10am to 2pm. Individuals, groups small and large, car clubs, bus groups etc are all welcome. If this time is not suitable, please contact our society president, Maureen Long Ph: 0417 042 303 to arrange a more convenient time.



Visit our website:
www.taralga-historical-society-and-museum.com

Feel free to contact our Society through Maureen Long (0417 042 303) and Mary Chalker (02 4840 2084), if you have or need assistance with any research. We have a lot of material relating to Taralga & surrounding areas, many local families and the history of local churches, businesses etc.

Local Historical Societies



Crookwell & District Historical Society

Crookwell Memorial Centre
Denison St, Crookwell NSW 2583
PO Box 161 Crookwell 02 4832 0630
crookwellhistosoc@yahoo.com.au
Open Tues/Thurs/Fri 11am - 4pm

Gunning & District Historical Society

Pye Cottage Museum
Yass St, Gunning NSW 2581
PO Box 3 Gunning 02 4845 1337
Pye Cottage Museum open every 4th Sunday and by appointment

Taralga Historical Society

Taralga Historical Museum
83 Orchard St, Taralga NSW 2580
www.taralga-historical-society-and-museum.com 0417 042 303
Taralga Historical Society Museum open most Saturdays 10am - 2pm or by appointment

Maps and brochures including the Guide to Fossicking in NSW are available at the Crookwell Visitor Information Centre and online at www.visitupperlachlan.com.au.



CROOKWELL HERITAGE RAILWAY

Home of the Upper Lachlan Ride the Rails Trail

The Crookwell Railway Station Precinct is a State Heritage Asset described as a significant pioneer rail branch line terminus. The railway infrastructure and museum is maintained and operated by the Crookwell Heritage Railway Inc. The group operates a variety of heritage NSW Railways track maintenance vehicles, commonly called Trikes.

The Upper Lachlan Ride the Rails Trail between Crookwell and McAlister using trikes and Rail Explorer pedal-powered rail bikes is currently under development.

Open 3rd weekend of the month – new members and visitors always welcome
Address Colyer St, Crookwell
Email crookwellheritagerailway@gmail.com **Facebook** Crookwell Railway
GCHR.ORG.AU



TANJENONG



THE ARGYLE INN



OBSERVATORY BNB

Lovely views over the valley. Comfy, spacious and ensuite rooms.

Dining /living area, breakfast included.

Opportunity to view the night sky through a large telescope.

Type BnB
Rooms 1x QB, 1x 2KS (can be made into QB)
Address 2505 Range Rd, Bannister
Phone 0417 023 138
Email gnmitch@ozemail.com.au



ELDORADO COTTAGE

WHETHER YOU CHOOSE A HISTORIC COUNTRY COTTAGE WITH A COSY WOOD FIRE, A CABIN BY THE LAKE OR A FARMSTAY WITH VIEWS FOREVER, YOU WILL BE GREETED WITH A SMILE AND A WARM WELCOME.

Accommodation in the region can offer not only a place to lay your head but an authentic country experience. Select from a wide range of options including traditional B&Bs, self-contained cottages, motels, pubstays, cabins, farmstays and more. Spend your time off the beaten track in a secluded retreat or stay in the heart of a village within walking distance of cafés, clubs and pubs.

For the full range of accommodation options go to www.visitupperlachlan.com.au or google where to stay your preferred location in the Upper Lachlan.



RED HOUSE

Situated in the heart of Crookwell we offer one queen room with ensuite opening onto a deck overlooking our mature and peaceful garden.

Facilities in your room include, TV, microwave and toaster oven. With IGA and cafes just a two minute walk away, self catering is a breeze. Enjoy warm, cosy accommodation overnight or for the weekend. Ask about our longer stay rates. This property is pet free and low allergen. Gluten free utensils etc available on request.

Type Bed and Breakfast **Rooms** 1 Queen
Address 15 Roberts Street, Crookwell
Email redhouseaccommodation@yahoo.com **Phone** 0428 238 023
FACEBOOK.COM/REDHOUSEACCOMMODATION



WOMBEGAN CAVES

There is too much to see and do at Wombeyan Caves to just come for the day - why not stay overnight, the park offers a range of accommodation options that cater for individuals through to large groups.

Choose from camp sites, caravan sites, secluded cabins or dormitories for large groups. Park opens 24/7, Caves open 9am – 4pm every day except Christmas Day.

Accommodation Options
 Camp Sites, Caravan Sites, Cabins, Dormitories
Address
 Wombeyan Caves Rd, Wombeyan Caves (via Taralga)
Phone 02 4843 5976
Email wombeyan.caves@environment.nsw.gov.au
NATIONALPARKS.NSW.GOV.AU

abercrombie ridge

luxury country retreat | weddings & events

With spectacular views across the Abercrombie River Valley, 'The Barn' and 'The Lodge' provide separate and private accommodation for your next country getaway. Book your next staycation, special occasion or event at Abercrombie Ridge.



enquire and book online at www.abercrombieridge.com.au

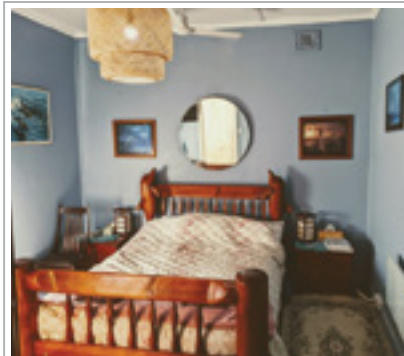
All Saints Laggan



**BOUTIQUE
ACCOMMODATION**

allsaintslaggan.com

0414 437 395

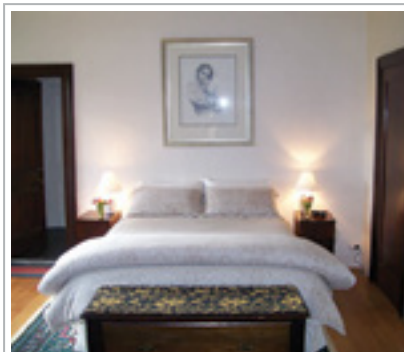


SPUD MURPHY'S INN

Spud Murphy's Inn, built in 1862, is located in Crookwell's bustling main street. With a picturesque garden and spacious parking, Spud Murphy's Inn offers genuine country hospitality.

Choose from 18 rooms, including three kings and four queens with ensuites. There are also additional bathrooms, plus shared kitchen and BBQ facilities and a large balcony. All rooms are heated and have ceiling fans. Recreational groups and tradesmen are welcomed.

Type B&B
Rooms 18
Address 12 Goulburn St, Crookwell
Phone 02 4832 1004
SPUDMURPHYSINN.COM



PINN COTTAGE AND HOMESTEAD

Pinn Cottage and Homestead offers a range of accommodation suitable for everything from romantic getaways through to family and group gatherings.

Set within park like gardens, on the edge of Kiamma Creek, the property contains both a beautifully restored 19th century bluestone cottage and a colonial style homestead, all within the Crookwell township with easy access to cafes, restaurants, sports facilities and rural attractions.

Type Self Contained **Rooms** Cottage studio apartment 2QB, Cottage Front apartment 2QB, Homestead 4QB, with extra 2SB
Address 10 & 2 Prospect St, Crookwell
Phone 0421 457 135
Email info@pinncottage.com.au
PINNCTOTTAGE.COM.AU



MARKDALE FARMSTAY

On the Southern Tablelands of New South Wales, Markdale offers an out-of-the-ordinary experience to fire up the senses.

Just 3 hours from Sydney and 90 minutes from Canberra, Markdale is a working sheep and cattle station in the Great Dividing Ranges with self catered farmstay accommodation for up to 24 people.

Guests can stay in the original 1850's 'Stone Houses' or 'Shearers Quarters', which have fully equipped kitchens, linen, heating, bbqs and wifi.

Explore the 6,300 acres and award winning Edna Walling garden, enjoy tennis, the pool and an evening by the fireplace.

Type Self Contained **Sleeps** Up to 24 guests
Address 462 Mulgowrie St, Binda **Phone** 0418 868 830
Email farmstay@markdale.com
MARKDALE.COM



THE CHURCH @ LAGGAN

This is a charming historic church that has been lovingly converted into luxury accommodation.

Set within the original stone church is a stunning contemporary interior which provides a fantastic luxurious country get away for up to 8 guests. Accommodation includes a comfortable lounge and dining space, 2 queen bedrooms, fully contained kitchen, bathroom with bath and shower, laundry with washer and dryer and fire wood. The Church @ Laggan is located on an elevated block on over an acre of garden on the edge of the historic village of Laggan, 8km outside Crookwell in the beautiful rolling hills of the Southern Tablelands. Within walking distance of Laggan village, it is ideal for all ages.

Type Self Contained **Rooms** 2 Queen Bedrooms
Address Laggan Rd, Laggan **Phone** 0414 394 461
Email lagganchurch@gmail.com
THECHURCHATLAGGAN.COM



CHARLIE'S ON CHURCH

Charlie's self-contained accommodation is a renovated 1940's cottage in the delightful and historic country village of Taralga. Accommodating up to 9 people, it is your home away from home.

Charlie's has 3 large bedrooms, your own fully equipped kitchen, bathroom, 2 toilets, laundry and large lounge to sit back, relax and enjoy the beautiful country atmosphere. There is also a fire pit to sit around on a winter's night and toast marshmallows.

Type Self Contained **Rooms** 3 bedrooms
Address 33 Church St, Taralga
Phone 0429 13 13 31
Email tm_bennett1@bigpond.com



HOLD COTTAGE

Sitting high on the hill overlooking the village of Gunning, Hold Cottage has been lovingly restored and is now a place for our guests to step back and embrace the simple life.

A luxury, country escape designed to nurture you and slow you down. A space to pause. Curl up on the couch and get cozy in front of the open fire or step outside, light the fire pit and dine under the festoon lighting. Under an hour from Canberra and 2.5 hours from Sydney, Gunning is part of the greater Southern Tablelands Region. Travel the roads through the ever-changing landscape, immerse yourself in the regions rich history and discover Hold Cottage and country NSW.

Type Self Contained **Rooms** 2x QB
Instagram @hold_cottage
Email info@holdcottage.com.au
HOLDCOTTAGE.COM.AU

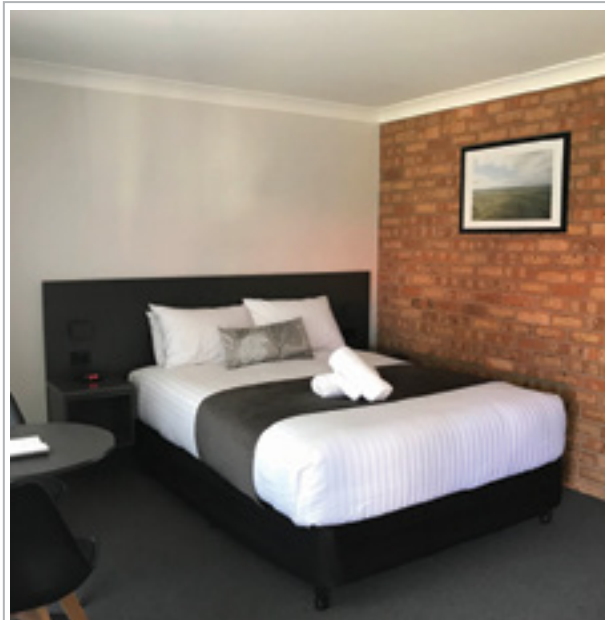


BETHANIA COTTAGE

We welcome guests to Bethania Cottage situated in the High Country of Bannister, just 2 and a half hours from Sydney and close to Goulburn and Crookwell.

This charming cottage has outstanding views from the comfort of the large deck, a unique outdoor bath and shower (also indoor bathroom), a cosy log fire in the living room, firepit, swimming in the large water hole, push bikes for all ages, and a cubby house and swing for the kids. Guests are welcome to join in farm activities, enjoy a guided tour of a windfarm, or just relax and visit the variety of speciality shops, cafes, pubs and restaurants nearby. Ideal for families.

Type Self Contained **Rooms** 1 Queen, 3 Singles, 1 Single
Address 267 Bannister Lane, Bannister
Phone 0409 759 331
Email waffyk@hotmail.com



UPLAND PASTURES

At Upland Pastures we pride ourselves on friendliness, cleanliness and good old fashioned country hospitality.

We offer a range of accommodation from Standard Rooms to Deluxe Suites and don't forget to try our hearty country breakfasts. Located within walking distance to the CBD we are perfectly located on acreage with plenty of off street parking. So whether it's a short break away, staying a while to explore the region, enjoy the comfort, convenience and peace and quiet that Uplands Pastures Motel has to offer.

Type Motel **Rooms** Standard and Deluxe Rooms
Address 2 Oram St, Crookwell **Phone** 02 4832 1999
Email info@uplandpasturesmotel.com.au
UPLANDPASTURES.MOTEL.COM.AU



ROSLYN ESTATE FARMHOUSE

COUNTRY ESCAPE GREAT FOR ALL SEASONS

Roslyn Estate Farmhouse is a home away from home accommodating up to 7 people. Set on a property in the Roslyn area, the home is ideal for a weekend escape for a family or a group of friends to experience your very own slice of country life. Situated close to Crookwell on the Southern Tablelands with an easy drive from Sydney and Canberra.

Find us at: roslynestate.com.au



Carinya

Grand residence in heart of Crookwell

A perfect base to explore this picturesque country town and its beautiful surrounding villages.

It is an easy drive from Sydney and Canberra. Accommodation for 8 people makes it ideal for a family or a group of friends.



Find us at: roslynestate.com.au



0407 896 427
elysianj@outlook.com

103 Third Creek Rd, Crookwell NSW 2583



A beautifully appointed, luxury style unit located on a superior Crookwell property known as "Lake Birubi".

Brand new deluxe accommodation conveniently located on sealed roads, only 5 minutes from Crookwell, 25 mins from Goulburn & 1hr from Canberra.





TUENA CAMPGROUND

The Tuena Camping and Picnic Ground is a lovely flat spot along the babbling creek in historic Tuena.

Facilities include an amenities block, barbecue, potable water and covered tables. It is pet-friendly. Pop into Parsons General Store for payment for your stay and for information about fossicking.

No bookings required.

Type Campground
Sites Powered & Unpowered Sites
Address Bathurst Rd, Tuena
Phone 02 4834 5235
VISITUPPERLACHLAN.COM.AU

WATER VIEWS OR BUSH RETREAT WHEN YOU ARE CARAVANNING, MOTOR-HOMING OR CAMPING, THE CHOICE IS YOURS.

From basic bush camping to fully equipped caravan parks, the region has a location to suit all types of travellers and provide a base whilst you explore the surrounding countryside, towns and villages. While you're here, why not take in a special event?

For a full list of options for caravans, motorhomes and campers please see the directory on page 48.



When RV tourists enter a town displaying the RV Friendly Town™ sign, they know they will be welcome, that appropriate facilities will be provided and that they will have access to a safe place to stay overnight.

The Upper Lachlan Shire is proud to promote Gunning and Bigga as RV Friendly towns under the Campervan and Motorhome Club of Australia program with Barbour Park and the Bigga Recreation Ground used for overnight stays and a base to further explore the sights and sounds of the Southern Tablelands.



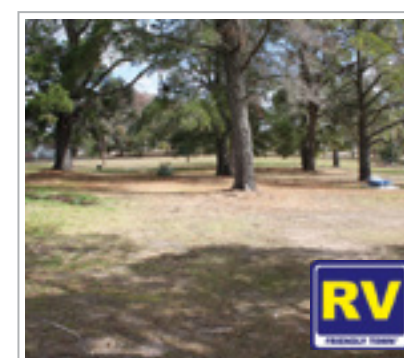
BARBOUR PARK

Barbour Park offers 48 hours free parking for caravan and campervans right in the heart of Gunning.

The park features free BBQs, toilets and hot showers in a picturesque setting next to Meadow Creek just a short stroll to Gunning's hotel, cafes and specialty shops. The Gunning Showground provides overflow sites for Barbour Park as required.

No booking required.

Type Rest Area
Sites Unpowered sites
Address Yass St, Gunning
Phone 02 4832 1988
VISITUPPERLACHLAN.COM.AU



BIGGA RECREATION GROUND

Bigga Recreation Ground offers 72 hours free camping right in the heart of Bigga village.

The ground features a renovated amenities block including toilets and hot showers. Dump point available.

No booking required.

Type Rest Area
Sites Unpowered sites
Address Mulgowrie St, Bigga
Phone 02 4835 2347
VISITUPPERLACHLAN.COM.AU



CROOKWELL CARAVAN PARK

Crookwell Caravan Park is situated in Crookwell township in the beautiful parklike settings created by the meeting of the Crookwell River with Kiamma Creek.

The park offers powered caravan and camping sites within easy walking distance of the Crookwell town centre with its many eateries, supermarket and specialty shops. Well appointed camp kitchen complete with cosy fire for the colder months. Dump point available.

Type Caravan Park **Sites** 20 powered sites on slabs, various grassed sites
Address Laggan Rd, Crookwell
Phone 02 4832 1988
Email info@visitupperlachlan.com.au
VISITUPPERLACHLAN.COM.AU



TARALGA SHOWGROUND

The Taralga Showground is a safe quiet place to camp, whether you're planing a short stay or a long stay.

There are places for tents, caravans, camping trailers, horse floats and trucks with powered sites available. The Showground is an ideal spot when there are major events or simply as a base to explore the surrounding region and enjoy the historic township of Taralga.

Type Showground
Sites Powered and Unpowered sites
Address Walsh Street, Taralga
Phone 02 4840 2558 or 02 4840 2831
VISITUPPERLACHLAN.COM.AU

The SOUTHERN TABLELANDS

THIS IS COUNTRY LIVING

WHEN VISITING THE UPPER LACHLAN SHIRE, WE ENCOURAGE YOU TO EXPLORE THE SURROUNDING TOWNS AND VILLAGES THAT MAKE UP THE SOUTHERN TABLELANDS REGION.

Escaping to the country is a great way to unwind and rest in our hectic world. The Southern Tablelands is a country location where you can recharge and enjoy the simple life, but what's on offer is anything but simple.

Packed with authentic wineries, livestock, fresh produce and big, local personalities, the country lifestyle in the Southern Tablelands is actually living pretty large.



HARDEN-MURRUMBURRAH, BOOROWA, JUGIONG & YOUNG

Hilltops Region is home to the beautiful towns of Boorowa, Harden-Murrumburrah, Young, and surrounding villages, including Jugiong. The beautiful scenery is complimented by the warm country hospitality, and equally matched by the tasty produce, award winning local wines, boutique shopping and fascinating history.

Come and pick your own delicious cherries or visit for the Irish Woolfest and spectacular Running of the Sheep. Test your skills at the Harden Kite Festival or join in all the fun at the National Cherry Festival. Spend a day or two by the Murrumbidgee River in Jugiong, or simply take in the majestic rolling fields of canola.

With a wide range of accommodation, from boutique barns to free camping by the river, you will find the perfect place to lay your head and have a restful and relaxing escape.

Whatever time of year you visit the Hilltops, you will be planning your next visit before you have even left.

Visit visithilltopsregion.com.au or call **1800 628 233**.

Goulburn

Discover fascinating stories of our eclectic history through the abundance of museums, homesteads and stunning heritage architecture, or immerse yourself in our captivating galleries and performance venues and let your imagination wander.

Goulburn boasts a variety of beautiful walking trails, playgrounds, barbeque and picnic areas and parks to enjoy. Play at the impressive Adventure Playground, or perhaps a peaceful bushwalk amongst nature is more suited. Discover the new walking trail along the banks of the Wollondilly River – the perfect setting for a relaxing picnic with water views.

Experience a traditional 'Country Mile of Shopping' in the main thoroughfare of Auburn Street and indulge your senses in the region's diverse spread of food and beverage.

Having too much fun to leave? Stay another day, we've got you covered. From intimate guest houses, B&B's, self-contained cosy heritage homes and pub stays to sleek and modern hotels – Goulburn has a broad range of accommodation to suit every occasion and budget.

For more information, drop in to the Goulburn Visitor Information Centre on Sloane Street (opposite Belmore Park), call **02 4823 4492** or visit goulburnaustralia.com.au.



QUEANBEYAN, BUNGENDORE & BRAIDWOOD

When you linger a little longer on the Treasure Trail, you'll find many hidden gems dotted around the beautiful countryside. The Kings Highway is the main route between Canberra and the Coast and is the major touring route through Queanbeyan-Palerang.

Stop for a coffee or a lunch, explore the fascinating art galleries and stay for a glass of local wine or two in the region's famous cool climate wineries nestled amongst the rolling landscape around Bungendore.

Do a spot of shopping in Braidwood or pop into the Braidwood Visitor Information Centre for a map of the town's heritage walk, guiding you through the stories of the first people, bushrangers, gold-seekers and rural pioneers.

Take in the great outdoors while horse-riding, meandering through ancient forests or camping under the starry sky.

Closer to Canberra, visit Queanbeyan and catch a show at the home of regional theatre in NSW – The Q Performing Arts Centre. Queanbeyan is in a state of transformation; it is one of regional NSW's fastest growing cities combining its progressive vision, while respecting and reflecting its historic past and its vital role in the establishment of the national capital.

Visit treasuretrail.com.au to find your treasure in Queanbeyan-Palerang.

Yass Valley

BINALONG, BOOKHAM, BOWNING,
BURRINJUCK, GUNDAROO,
MURRUMBATMAN, SUTTON,
WALLAROO, WEE JASPER & YASS

Escape to Yass Valley and immerse yourself in real country experiences without venturing too far from the city.

Be welcomed by locals when visiting award winning restaurants and cellar doors, retail stores and galleries, where you will have the opportunity to experience life as we live it.

Stop and chat with a local, the true guides to our captivating region. With an impressive food and wine scene, Yass Valley is the place to experience farm fresh produce and award winnings local wines. Chat with passionate winemakers in Murrumbatman and Gundaroo about their latest vintage, or sit back and relax in one of our many restaurants and cafés.

From a bushranger's grave in Binalong, a famous poet's hangout in Bowning, experience local arts at boutique galleries, an underground wonderland in Wee Jasper, to water-sports on Lake Burrinjuck, Yass Valley is a place to discover the real Australia.

Visit yassvalley.com.au or call **1300 886 014** for more information.



BUSINESS DIRECTORY

Accommodation

BUSINESS NAME	LOCATION	CONTACT
Bethania	Bannister	AirBnB
Observatory BnB	Bannister	AirBnB
Windwood Retreat	Bevandale	AirBnB
Federal Hotel	Bigga	02 4835 2219
Hillcrest House	Binda	0419 234 890
Markdale	Binda	0418 868 830
Mill Cottage	Binda	02 4835 6087
Rosewood	Binda	AirBnB
Bushranger Hotel	Collector	02 4848 0071
Collector Cottage	Collector	AirBnB
Greysen Estate Artists' Retreat	Collector	AirBnB
Lynwood Cottage	Collector	AirBnB
Selah Garden Studio	Collector	AirBnB
Crooked Corner Cottage	Crooked Corner	AirBnB
Carinya	Crookwell	AirBnB
Criterion Hotel	Crookwell	02 4832 2735
Crookwell Alpaca Farm	Crookwell	0414 464 206
Crookwell Farmhouse	Crookwell	0422 113 142
Crookwell Hotel/Motel	Crookwell	02 4832 1016
Crookwell Manor House	Crookwell	AirBnB
Elysian Farmstay	Crookwell	AirBnB
Mister Munro	Crookwell	AirBnB
Pinn Cottage	Crookwell	0421 457 135
Spud Murphy's Inn	Crookwell	02 4832 1004
Ravenscroft Cottage	Crookwell	0438 447 333
Red House Accomodation	Crookwell	0428 238 023
Upland Pastures Motel	Crookwell	02 4832 1999
Abercrombie Ridge	Curraweela	0405 632 009
Grathawai Homestead	Curraweela	0450 100 899
Tanjenong Cottages	Curraweela	02 4843 8150
The Old Wool Co-op	Dalton	AirBnB
Eudora Farm	Fullerton	AirBnB
Hadley Homestead	Fullerton	0427 272 181
Eldorado Cottage	Golspie	AirBnB
Country Cottage Gunning	Gunning	AirBnB
Gunning Motel	Gunning	02 4845 1191
Hold Cottage	Gunning	AirBnB
Merino Café Accommodation	Gunning	AirBnB
Risbor	Gunning	AirBnB
Storm Cottage	Gunning	0411 133 261

Accommodation

BUSINESS NAME	LOCATION	CONTACT
The Stay	Gunning	AirBnB
All Saints Laggan	Laggan	Riparide
Ilma Country Accommodation	Laggan	0418 404 066
Kimbla	Laggan	AirBnB
The Church @Laggan	Laggan	Stayz
Laggan Cottage	Laggan	02 4837 3039
Laggan Estate	Laggan	AirBnB
Willowvale Mill	Laggan	AirBnB
Clancy's Cottage	Narrawa	02 4836 5282
Moorabinda Guest House	Narrawa	0437 998 827
Moorabinda Huts	Narrawa	02 4836 5203
Hazeldean Homestead	Peelwood	AirBnB
Roslyn Estate	Roslyn	AirBnB
Argyle Inn	Taralga	0448 402 008
Charlies on Church	Taralga	0429 131 331
Lilac Cottage	Taralga	02 4840 2268
Taralga Cottage (1)	Taralga	AirBnB
Taralga Cottage (2)	Taralga	AirBnB
Taralga Hotel	Taralga	02 4840 2007
Taralga Terraces	Taralga	AirBnB
The Sanctuary Farmhouse	Taralga	0419 014 540
The Shed	Tuena	AirBnB
Hillview Cottage	Wheeo	AirBnB

Caravan, Camping & Cabins

BUSINESS NAME	LOCATION	CONTACT
FREE CAMPING		
Abercrombie River Camp	Abercrombie	02 4832 1988
Bigga Recreation Ground	Bigga	02 4835 2347
Bummaroo Ford	Curraweela	1300 072 757
Barbour Park (48hr free)	Gunning	02 4832 1988
FEE REQUIRED		
Abercrombie Caves	Abercrombie	1300 072 757
Crookwell Caravan Park	Crookwell	02 4832 1988
Reflections Holiday Park Grabine Lakeside	Grabine	02 4835 2345
Taralga Showground	Taralga	02 4840 2558
Tuena Campground	Tuena	02 4834 5235
Wombeyan Caves	Wombeyan	02 4843 5976

Attractions & Activities

BUSINESS NAME	LOCATION	CONTACT
Markdale Edna Walling Garden	Binda	0418 868 830
Helen Stephens Gallery	Collector	0406 836 393
Calenny Orchard Beekeeping Experience	Crooked Corner	02 4835 3017
Alpaca Farm Experience	Crookwell	0414 464 206
Crookwell & District Art Gallery	Crookwell	02 4832 1988
Crookwell Railway Museum	Crookwell	02 4832 1988
Crown Theatre Café Play Centre	Crookwell	02 4832 2298
Gullen Range Wind Farm	Crookwell	1800 509 711
Lindner Sock Factory	Crookwell	02 4832 0202
St Bartholomew's Organ Recital	Crookwell	02 4832 1988
Sydney Vintage Car Restoration	Crookwell	02 4843 0888
Tea House Gallery	Crookwell	0403 981 055
Tanjenong Tin Shed Art Gallery	Curraweela	02 4843 8150
Reflections Holiday Park Grabine Lakeside	Grabine	02 4835 2345
Picture House Art Gallery & Bookstore	Gunning	02 4845 1889
Pye Cottage Museum	Gunning	02 4845 6339
Crystal Brook Gardens and Lavender Farm	Laggan	02 4843 3333
Horses Teaching Humans Herd	Laggan	02 4837 3397
Taralga Museum	Taralga	0417 042 303
Taralga Wildlife Park	Taralga	0419 014 540
Abercrombie Caves	Trunkey Creek	02 6368 8603
Wombeyan Caves	Wombeyan	02 4843 5976

Churches with weekly services

BUSINESS NAME	LOCATION	CONTACT
St James Anglican	Binda	0428 238 023
St Bartholomew's Anglican	Crookwell	02 4832 1057
St Mary's Catholic	Crookwell	02 4832 1633
Wesley Uniting	Crookwell	02 4832 1026
St Francis Xavier Catholic	Gunning	02 6226 1086
Christ the King Catholic	Taralga	02 6239 9863
St Luke's Anglican	Taralga	02 4840 2208
St Stephen's Presbyterian	Taralga	02 4843 8163

Food & Wine

BUSINESS NAME	LOCATION	CONTACT
A Country Wedding	Binda	0419 234 890
Bigga Golf Club	Bigga	02 4835 2260
Federal Hotel	Bigga	02 4835 2219
Bushranger Hotel	Collector	02 4848 0071
Collector Wines	Collector	0415 991 078
Kiki's in The Grove	Collector	02 4848 0098
Some Café	Collector	0435 796 726

Food & Wine

BUSINESS NAME	LOCATION	CONTACT
Café Zestt	Crookwell	0438 428 988
Criterion Hotel	Crookwell	02 4832 2735
Crookwell Bistro	Crookwell	02 4832 0706
Crookwell IGA	Crookwell	02 4832 1159
Crown Theatre Café	Crookwell	02 4832 2298
Everley's Café Crookwell RSL	Crookwell	02 4832 1265
G Hills & Co	Crookwell	02 4832 1081
Hong Kong Gardens	Crookwell	02 4832 1888
Matt's Bakery	Crookwell	02 4832 2222
Meats a Treat	Crookwell	02 4832 1418
Paul's Café	Crookwell	02 4832 1745
19th Hole Café Crookwell Golf Club	Crookwell	02 4832 1285
Albion Hotel	Grabben Gullen	02 4836 7208
Gunning Butcher Shop	Gunning	02 4845 1559
Merino Café	Gunning	02 4845 1250
Old Hume Café	Gunning	02 4845 1034
Telegraph Hotel	Gunning	02 4845 1217
The Old Coach Stables	Gunning	0499 451 034
Laggan Hotel	Laggan	02 4837 3208
Laggan Pantry and Brewing Co	Laggan	02 4837 3039
Grand Ettie	Taralga	02 4840 2549
Taralga General Store	Taralga	02 4840 2831
Taralga Hotel	Taralga	02 4840 2007
Taralga Sports Club	Taralga	02 4840 2088
The Argyle Inn	Taralga	0448 402 008

Information

BUSINESS NAME	LOCATION	CONTACT
Crookwell Visitor Information Centre	Crookwell	02 4832 1988
Taralga Gifts and Goodies	Taralga	02 4840 2558

Real Estate Agents

BUSINESS NAME	LOCATION	CONTACT
Anderson MD & JJ	Crookwell	02 4832 1056
Duncombe & Co	Crookwell	02 4832 1732
Elders Rural Services	Crookwell	02 4832 3104
Pro Rural Agencies	Crookwell	0428 482 425

Service Stations

BUSINESS NAME	LOCATION	CONTACT
Bigga General Store	Bigga	02 4835 2234
Binda Store	Binda	02 4835 6024
Crookwell Fuel Supplies	Crookwell	02 4832 0497
Metro Petroleum	Crookwell	02 4832 2323
Mobil Crookwell	Crookwell	02 6054 1103

Service Stations

BUSINESS NAME	LOCATION	CONTACT
Spackman Motors	Crookwell	02 4832 1041
Bailey's Garage	Gunning	02 4845 1224
Gunning Mobile	Gunning	02 4845 1224
Gunning Motors	Gunning	02 4845 1394
Metro Petoleum	Gunning	02 4845 1394
Taralga Rural Supplies	Taralga	02 4840 2200
Parsons General Store	Tuena	02 4834 5235

Specialty Retail

BUSINESS NAME	LOCATION	CONTACT
Ensemble & Co	Crookwell	0409 245 220
Crookwell Country Bunches	Crookwell	02 4832 2344
Crookwell Emporium	Crookwell	0447 282 801
Crookwell Footwear & Workwear	Crookwell	02 4832 1636
Davies Newsagency	Crookwell	02 4832 1061
Harts Pharmacy	Crookwell	02 4832 1138
JD'S Hardware	Crookwell	02 4832 1155
JD'S Rural Supplies	Crookwell	02 4832 1906
Lindner Quality Socks	Crookwell	02 4832 0202
Mad Hatters	Crookwell	0487 291 119
McGeechan Farm Supplies	Crookwell	02 4832 1066
Soul Pattinson	Crookwell	02 4832 1177
TJC Products	Crookwell	02 4832 1700
Top Paddock	Crookwell	02 4832 2319
Wacky Wombats Bargains	Crookwell	02 4832 2817
Creative Gunning	Gunning	0414 230 701
Gunning Nearly Antiques & Collectables	Gunning	0418 419 721
Gunning Pharmacy	Gunning	02 4845 1339
Picture House Gallery & Bookshop	Gunning	02 4845 1889
Whimsical Wares	Gunning	0410 449 923
Will & Russ	Gunning	0438 324 529
Eclectopia Gifts and Speciality Homewares	Taralga	0468 934 483
Inn Commercial Stores	Taralga	0448 402 008
Taralga General Store	Taralga	02 4840 2831

Specialty Retail

BUSINESS NAME	LOCATION	CONTACT
Taralga Gifts & Goodies	Taralga	02 4840 2558
Universal Books & Old Wares	Taralga	02 4840 2445
Parsons General Store	Tuena	02 4834 5235
Tuena Craft Shop	Tuena	02 4834 5235

Sporting Facilities

BUSINESS NAME	LOCATION	CONTACT
PUBLIC SWIMMING POOLS		
Crookwell Swimming Pool	Crookwell	02 4832 1652
Gunning Swimming Pool	Gunning	02 4845 4100

GOLF COURSES

Bigga Golf Club	Bigga	02 4835 2260
Crookwell Golf Club	Crookwell	02 4832 1285
Gunning Golf Club	Gunning	02 4845 1195
Taralga Golf Club	Taralga	02 4843 8187

TENNIS COURTS

Crookwell Tennis Courts	Crookwell	02 4832 2098
Bigga Tennis Courts	Bigga	02 4835 2260
Gunning Tennis Courts	Gunning	02 4845 4100
Taralga Tennis Courts	Taralga	02 4840 2445

LAWN BOWLS

Crookwell Services Club	Crookwell	02 4832 1265
Taralga Sports Club	Taralga	02 4840 2088

SQUASH

Crookwell Squash Courts	Crookwell	02 4832 1355
-------------------------	-----------	--------------

SHOWGROUNDS

Crookwell	Crookwell	0417 985 686
Gunning	Gunning	02 4845 4105
Taralga	Taralga	0428 876 866

VETS & Boarding Kennels

BUSINESS NAME	LOCATION	CONTACT
Crookwell Veterinary Hospital	Crookwell	02 4832 1977
Pawtails Rural Retreat	Laggan	02 4837 3027
Culley Veterinary Services	Wheeo	0458 367 251



SHARE YOUR UPPER LACHLAN EXPERIENCE

#visitupperlachlan

 @upperlachlantourism

 @upplachtourism







Hillcrest

HOUSE - BINDA, NSW

We put “luxury” back into Luxury Retreat



for “the art of Just Relaxing” ... www.hillcresthouse.com.au

